

NASON

E N G I N E P A R T S

Valve Covers & Inlet Manifolds

2025/26



Manufacturer Index

1.	AUDI... (Refer to VAG Group)-----	1
2.	BMW -----	1
3.	FORD... (Including Land Rover, Mazda, PSA, Volvo)-----	6
4.	MAZDA... (Including Ford)-----	10
5.	HOLDEN... (Including Opel)-----	11
6.	HONDA -----	15
7.	Hyundai/KIA -----	24
8.	LAND ROVER -----	25
9.	MERCEDES BENZ -----	26
10.	MINI -----	28
11.	MITSUBISHI -----	29
12.	NISSAN -----	30
13.	PSA GROUP... (Including Citroen & Peugeot)-----	37
14.	TOYOTA -----	38
15.	VAG GROUP... (Including Audi & Volkswagen)-----	42
16.	INLET MANIFOLDS... (Ford, Mazda, Holden, Jeep)-----	45

Audi - Refer to VAG Group

BMW



VC011

Model: 118D, 220D, 320D, 420D, 520D, 620D, X3, X4, X5
Engine: B47D20, N47D20, N47SD20- 2.0L, CRD Diesel



VC015

Model: 116i, 118i, 120i, 316i-1.6L Petrol
Engine: N13B16A



VC021

Model: 335i, 435i, 740i, 740Li, M135i, M235i, X5, B3, B4,
Alpina
Engine: N55B30A

BMW



VC051

Model: 118i, 120i, 218i, 225xe, X1, X2 1.5L Petrol
Engine: B38A15



VC056

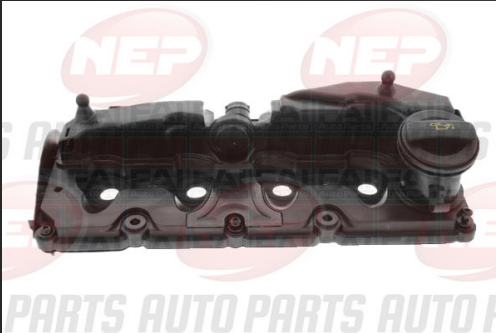
Model: 120i, 125i, 128Ti, 220i, 225i, 230i, 320i, 330e, 330i,
420i, 430i, 520i, 630i, 740e
Engine: B48A20, B48B20



RCP1090

Model: 125i, 228i, 328i, 428i, 528i, X1, X3, X5, Z4
Engine: N20B20A/B- 2.0L Petrol

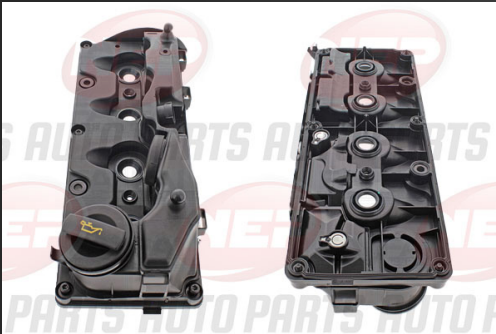
BMW



RCP1091

Model: 325D, 330D, 335D, 430D, 435D, 525D, 530D, 535D, 635D, 730D, X3, X5, X6

Engine: M57D30, N57D30- 3.0L Diesel



RCP1092

Model: 325D, 330D, 335D, 430D, 435D, 525D, 530D, 535D, 635D, 730D, X3, X5, X6

Engine: M57D30, N57D30- 3.0L Diesel



RCP1093

Model: 325D, 330D, 335D, 430D, 435D, 525D, 530D, 535D, 635D, 730D, X3, X5, X6

Engine: M54B22, M54B25, M54B30- 2.2L, 2.5L, 3.0L Petrol

BMW



RCP1094

Model: 320i, 320Ci, 323i, 328i, 520i, 523i, 528i, 728i, 730i, X3, X5, Z3, Z4

Engine: M52B20, M52B25, M52B28, M54B22, M54B30- 2.0L, 2.2L, 2.5L, 2.8L 3.0L Petrol



RCP1098

Model: 330D, 530D, 540D, 730D, 740D, X3, X5, X6, X7

Engine: B57D30- 3.0L Diesel



RCP1099

Model: 125i, 130i, 323i, 325i, 330i, 523i, 525i, 528i, 530i, 630i, 730i, X1, X3, Z4

Engine: N52B25, N52B30- 2.5L, 3.0L Petrol



RCP1103

Model: 118i, 120i, 316Ti, 318i, 318Ci, 318Ti, 320i, X1, Z4

Engine: N42B18, N42B20, N46B20- 1.8L, 2.0L Petrol

BMW



RCP1104

Model: 118i, 120i, 318i, 318Ci, 318Ti, 320i, X1, Z4
Engine: N46B20-, 2.0L Petrol



RCP1106

Model: 118D, 120D, 123D, 220D, 318D, 320D, 520D, 525D, X1,
X3, X5
Engine: N47D20- 2.0L Diesel



RCP1108

Model: 118D, 120D, 123D, 220D, 318D, 320D, 520D, 525D, X1,
X3, X5
Engine: B47D20, N47D20- 2.0L Diesel



RCP1109

Model: 118D, 120D, 123D, 220D, 318D, 320D, 420D, 520D,
525D, X1, X3, X5
Engine: N47D20- 2.0L Diesel

Ford



VC039 (Ford, Volvo)

Model: Ford Fiesta, Volvo C30, C40,
Engine: HHJC/E, TZJB, D4162T- 1.6L Diesel



VC070

Model: Fiesta, EcoSport
Engine: M1JC/E EcoBoost- 1.0L, Petrol



RCP1000 (Ford, Land Rover)

Model: Ranger, Transit, Defender, Discovery,
Freelander, Evoque
Engine: P4AT, CVRC, CVR5, 224DT, DT224- 2.2L Diesel



RCP1001 (Ford, Mazda)

Model: Everest, Ranger, Transit, BT50
Engine: P5AT- 3.2L Diesel

Ford



RCP1022

Model: Ranger, Transit
Engine: D2FA, D4FA, DOFA, FXFA,
H9FA/B- 2.4L Diesel



RCP1023

Model: Transit
Engine: CYF4, CYFA, QVFA, SRFA, SRFC,
CYFD- 2.2L Diesel



RCP1024 (Oil Separator)

Model: Ranger, Transit
Engine: EcoBlue BLFB, BLRA, YMF6, YNF6,
YNR6, YN2S- 2.0L Diesel



RCP1066 (Ford, Land Rover)

Model: Ranger, Transit, Defender, Discovery,
Freelander, Evoque
Engine: 244DT, D2FA, D4FA, DOFA, FXFA,
H9FA/B- 2.2L/2.4L Diesel

Ford



RCP1069

Model: Fiesta, Focus

Engine: Duratec TSJA, HXJB, PNDA- 1.6L Petrol



RCP1110

Model: Focus

Engine: MGDA- Duratec 2.0L Petrol



RCP1111

Model: Focus

Engine: AODA, AODB- Duratec 2.0L Petrol



RCP1116

Model: Focus, Mondeo

Engine: R9DA/D, R9CC/F, YVDB, TNCB/E- 2.0L EcoBoost Petrol

Ford



RCP1117

Model: Focus, Escape, Kuga
Engine: M9DD, M8MA- 1.5L Petrol



RCP1120 (Ford, Volvo, PSA)

Model: Mondeo
Engine: - AZBA, TXBA 2.0L Duratorq Petrol



RCP1121 (Ford, Volvo, Jaguar)

Model: Mondeo, S60, V60, XC60, E-Pace, XF
Engine: - TNBA, B4204T7, 204PT- 2.0L Petrol

Mazda



RCP1084 (Ford, Mazda)

Model: CX-7, Mazda 3, Mazda 6, Tribute, Escape
Engine: L3-V- Duratec 23- 2.3L Petrol



RCP1085 (Ford, Mazda)

Model: CX-7, Mazda 3, Mazda 6
Engine: L5-VE- Duratec 20, 2.0L, 2.5L Petrol



RCP1118

Model: CX-3/5, CX 30, Mazda 3/6, MX30
Engine: PE-VPS- 2.0L- Petrol



RCP1119

Model: CX-5/8, CX-60/80, Mazda 3/6
Engine: PY-VPS- 2.5L Petrol

Holden



RCA2000 (Holden, Chevrolet)

Model: Commodore, Corvette

Engine: LS1, L76, L77, L98- 5.7L, 6.0L- Petrol

Position: Right Hand Bank



RCA2001 (Holden, Chevrolet)

Model: Commodore, Corvette

Engine: LS1, L76, L77, L98- 5.7L, 6.0L- Petrol

Position: Left Hand Bank



RCA2002 (Holden, Chevrolet)

Model: Commodore, Corvette

Engine: L76, L77, L98, LS3- 6.0L, 6.2L- Petrol

Position: Right Hand Bank



RCA2003 (Holden, Chevrolet)

Model: Commodore, Corvette

Engine: L76, L77, L98, LS3- 6.0L, 6.2L- Petrol

Position: Left Hand Bank

Holden



VCA1000 (Holden, Chevrolet)

AFM Delete Plate

Model: Commodore

Engine: L76,L77, LS2- 6.0L Petrol



VCA1001 (Holden, Chevrolet)

Valley Cover Plate

Model: Commodore

Engine: LS3, LSA, L98- 6.0L, 6.2L Petrol



RCP1020 (Holden, Opel)

Model: Astra, Barina, Cruze, Trax, Zafira

Engine: A16LET, F16D4, F18D4, X18XE, X18XER 1.6L, 1.8L-
Petrol



RCP1021 (Holden, Opel)

Model: Astra, Barina, Cruze, Corsa, Trax

Engine: A14NET, A14XER, B14NET- 1.4L Petrol

Holden



RCP1025

Model: Colorado

Engine: LWH Duramax, LVN- 2.8L Diesel



RCP1026

Model: Colorado

Engine: LKH, LWN Duramax- 2.5L, 2.8L Diesel



RCP1036

Model: Commodore, Colorado, Rodeo,

Engine: Alloytec LCA, LEO, LW2, LWR- 3.6L Petrol

Position: Left Hand Bank



RCP1037

Model: Commodore, Captiva, Colorado, Rodeo

Engine: Alloytec LF1, LFW, LCA, LEO, LY7, LLT, LFX, LW2,
LWR- 3.0l, 3.6L Petrol

Position: Right Hand Bank

Holden



RCP1038

Model: Commodore, Captiva, Colorado, Rodeo
Engine: Alloytec LF1, LFW, LLT, LFX- 3.0L, 3.6L Petrol
Position: Left Hand Bank



RCP1040

Model: Barina, Combo,
Engine: Z14XEP- 1.4L Petrol



RCP1041

Model: Barina
Engine: F16D3- 1.6L Petrol



RCP1042

Model: Captiva
Engine: Z24SED- 2.4L Petrol

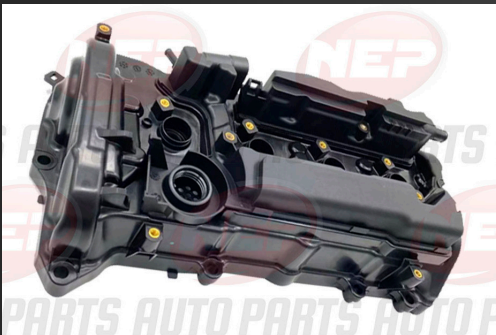
Honda



RCP1081

Model: Accord, Civic, CRV, HRV

Engine: R18A1/2, R18Z1, R18ZF, R18Z4, R20A, R20A2, R20A5- 1.8L, 2.0L Petrol



RCP1082

Model: Accord, Civic, CRV, HRV

Engine: K24W3, K24W7- 2.4L Petrol

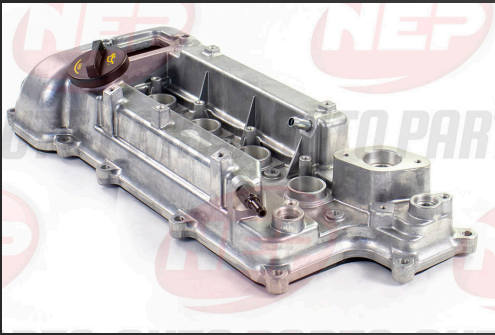


RCP1083

Model: Jazz, City

Engine: L13A, L13Z1, L15A, L15A1, L15A7- 1.3L, 1.5L Petrol

Hyundai/KIA



RCA2005

Model: Accent, i30, Veloster, Rio, Sportage, Kona, Tucson, Cerato, Pro Ceed, Seltos, Soul
Engine: G4FD, G4FJ- 1.6L Petrol



RCP1019

Model: iLoad, iMax, K2500, Sorento
Engine: D4CB- 2.5L Diesel



RCP1002

Model: iLoad, iMax, K2500, Sorento
Engine: D4CB- 2.5L Diesel



RCP1003

Model: iLoad, iMax, K2500, Sorento
Engine: D4CB- 2.5L Diesel

Hyundai/KIA



RCP1013

Model: Rondo, Sonata, Magentis

Engine: G4KA, G4KC- 2.0L, 2.4L Petrol



RCP1014

Model: iX35, i45, Cerato, Santa Fe, Sonata, Sorento, Sportage

Engine: G4KE, G4KD- 2.0L, 2.4L Petrol



RCP1015

Model: i45, iX35, Santa Fe, Sonata, Optima, Sorento, Sportage

Engine: G4KJ- 2.4L Petrol



RCP1016

Model: i45, iX35, Santa Fe, Sonata, Optima, Sorento, Sportage

Engine: G4KJ- 2.4L Petrol

Hyundai/KIA



RCP1017

Model: i30, i45, iX35, Kona, Santa Fe, Sonata, Optima, Sorento, Sportage, Optima
Engine: G4KJ, G4KH- 2.0L, 2.4L Petrol



RCP1018

Model: iLoad, iMax
Engine: G4KG- 2.4L Petrol



RCP1031

Model: i45, Cerato, Tuson, Elantra, Soul, Sportage
Engine: G4NA, G4NB- 1.8L, 2.0L Petrol



RCP1032

Model: i45, Cerato, Tuson, Elantra, Soul, Sportage
Engine: G4NA, G4NB- 1.8L, 2.0L Petrol

Hyundai/KIA



RCP1033

Model: i30, i40, iX35, Tucson, Cerato, Rondo, Sportage
Engine: G4NC- 2.0L Petrol



RCP1034

Model: i30, i40, iX35, Tucson, Cerato, Rondo, Sportage
Engine: G4NC- 2.0L Petrol



RCP1035

Model: Cerato, Tucson, Elantra, Soul, Sportage, Kona, Veloster, Seltos
Engine: G4NA, G4NH- 2.0L Petrol



RCP1043

Model: i20, i30, Accent, Soul
Engine: G4FC- 1.6L Petrol

Hyundai/KIA



RCP1044

Model: i20, i30, Accent, Rio, Soul

Engine: G4FA, G4FC- 1.4L, 1.6L Petrol



RCP1045

Model: : i20, i30, Accent, Elantra, Rio, Soul, Venue

Engine: G4FC, G4FG- 1.6L Petrol



RCP1050

Model: Accent, Getz

Engine: G4EA- 1.3L Petrol

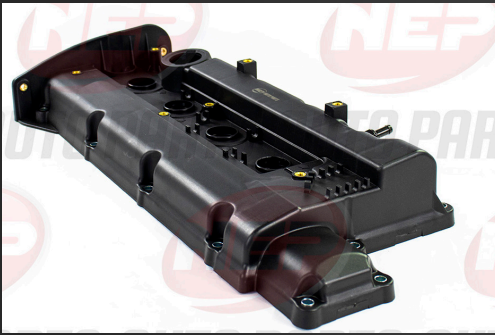


RCP1051

Model: Lantra, Coupe

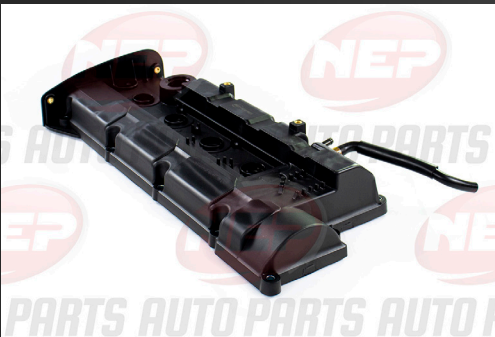
Engine: G4GF, G4GM-1.8L, 2.0L Petrol

Hyundai/KIA



RCP1052

Model: i30, Elantra, Tiburon, Tucson, Cerato, Sportage
Engine: G4GC, G4GB- 1.8L, 2.0L Petrol



RCP1053

Model: i30, Elantra, Tiburon, Tucson, Cerato, Sportage
Engine: G4GC- 2.0L Petrol



RCP1054

Model: i30, Elantra, Tiburon, Tucson, Cerato, Sportage
Engine: G4GC- 2.0L Petrol



RCP1055

Model: Accent, Excel, Scoupe
Engine: G4EK- 1.5L Petrol

Hyundai/KIA



RCP1056

Model: Accent, Excel, Getz
Engine: G4EC, G4FK- 1.5L Petrol



RCP1057

Model: Accent, Excel, Getz, Elantra, Rio
Engine: G4EC, G4ED, G4EE- 1.4, 1.5, 1.6L Petrol



RCP1058

Model: Getz, Rio
Engine: G4EE- 1.4L Petrol



RCP1059

Model: Accent, Elantra, Getz, Rio
Engine: G4ED- 1.6L Petrol

Hyundai/KIA



RCP1060

Model: i45, Cerato, Elantra, Tucson, Soul, Sportage
Engine: G4NA- 2.0L Petrol



RCP1061

Model: i30, Elantra, Tiburon, Tucson, Cerato, Sportage
Engine: G4GC- 2.0L Petrol



RCP1062

Model: i30, Elantra, Tiburon, Tucson, Cerato, Sportage
Engine: G4GC- 2.0L Petrol



RCP1063

Model: i30, Elantra, Tiburon, Tucson, Cerato, Sportage
Engine: G4GC- 2.0L Petrol

Hyundai/KIA



RCP1064

Model: Accent, Elantra, Getz, Rio
Engine: G4ED- 1.6L Petrol



RCP1065

Model: Accent, Elantra, Getz, Rio
Engine: G4ED, G4EE- 1.4L, 1.6L Petrol

Land Rover



VC006 (Jaguar/Land Rover)

Model: F-Pace, XF, XJ, Discovery, Vouge, Sports, Velar
Engine: 306DT 3.0L Diesel
Position: Left Hand Bank



VC007 (Jaguar/Land Rover)

Model: F-Pace, XF, XJ, Discovery, Vouge, Sports, Velar
Engine: 306DT 3.0L Diesel
Position: Right Hand Bank



RCP1097 (Volvo/Land Rover)

Model: S80, V70, XC60/70/90, Freelander 2
Engine: B6324S5- 3.2L Petrol

Mercedes Benz



VC008

Model: C180, C200, CLC200, CLK200, E200, SLK200
Engine: M271.940- 1.8L Petrol



VC013

Model: C200, C250, E200, E250
Engine: M271.860. M271.861- 1.8L Petrol



VC022

Model: C180, C200, C230, CLK200, E200, SLK200
Engine: M271.940- 1.8L Petrol

Mercedes Benz



RCP1100

Model: A200CDi, B20CDi, CLA20CDi, CLA200D
Engine: OM651.901, OM651.930- 2.1L Diesel



RCP1101

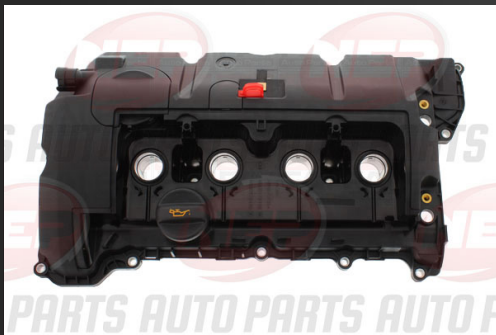
Model: C200, C220, C250, CLS250 C300, E200, E220, E250,
E300, GLC250, Vito, Sprinter, GLE250, ML250, SLK250
Engine: OM651.911/913/921/924/925/940/955/956/957/960/98
0- 2.1L Diesel



RCP1102

Model: C200, C220, C250, CLS250 C300, E200, E220, E250,
E300, GLC250, Vito, Sprinter, GLE250, ML250, SLK250
Engine: OM651.911/913/921/924/925/940/955/956/957/960/98
0- 2.1L Diesel

Mini



VC014

Model: Cooper, Countryman
Engine: N12B16A, N16B16A- 1.6L Petrol



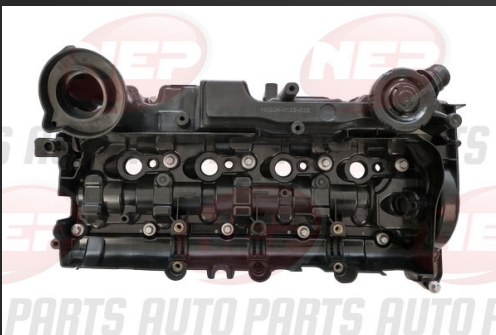
VC016

Model: Cooper S, Countryman S
Engine: N18B16A- 1.6L Petrol



VC019

Model: Cooper, Cooper S
Engine: N14B16A, N14B16C- 1.6L Petrol



VC032

Model: Cooper, Countryman
Engine: N47C16A, N47C20A- 1.6L, 2.0L Petrol

Mitsubishi



RCP1004

Model: Pajero, Triton,
Engine: 4N15- 2.4L Diesel



RCP1047

Model: ASX, Eclipse, Lancer, Outlander
Engine: 4B11 2.0L, 4B12- 2.4L Petrol



RCP1115

Model: Outlander
Engine: 4J11, 4J12- 2.0L, 2.4L Petrol

Nissan



RCP1010

Model: Navara

Engine: YD25DDT-2.5L Diesel

Application: D40 Thai built & D22



RCP1011

Model: Navara, Pathfinder

Engine: YD25DDT-2.5L Diesel

Application: D40 Spain built & Pathfinder R51 up to 01/2010



RCP1012

Model: Navara

Engine: YD25DDT-2.5L Diesel

Application: D40 Spain built & Pathfinder R51 01/2010 on



RCP1027

Model: Navara, Pathfinder, X-Trail T30

Engine: QR25DE- 2.5L Petrol

Nissan



RCP1028

Model: Navara, Pathfinder, X-Trail T31
Engine: QR25DE- 2.5L Petrol



RCP1029

Model: Navara, Pathfinder, X-Trail
Engine: QR25DE- 2.5L Petrol



RCP1030

Model: Navara, Pathfinder, X-Trail
Engine: QR25DE- 2.5L Petrol



RCP1048

Model: Navara, Pathfinder
Engine: VQ40DE- 4.0L Petrol
Position: Right Hand Bank

Nissan



RCP1049

Model: Navara, Pathfinder
Engine: VQ40DE- 4.0L Petrol
Position: Left Hand Bank



RCP1067

Model: Pulsar
Engine: QG16DE 1.6L Petrol



RCP1068

Model: Pulsar
Engine: QG18DE 1.8L Petrol



RCP1070

Model: Dualis, X-Trail
Engine: MR20DE 2.0L Petrol

Nissan



RCP1071

Model: Qashqai, X-Trail
Engine: MR20DD- 2.0L Petrol



RCP1072

Model: Juke, Pulsar
Engine: MR16DDT- 1.6L Petrol



RCP1073

Model: 350Z, Altima, Elgrand, Maxima, Murano, Pathfinder,
Skyline, Stagea
Engine: VQ35DE- 3.5L Petrol
Position: Right Hand Bank



RCP1074

Model: 350Z, Altima, Elgrand, Maxima, Murano, Pathfinder,
Skyline, Stagea
Engine: VQ35DE- 3.5L Petrol
Position: Left Hand Bank

Nissan



RCP1075

Model: 350Z, Altima, Elgrand, Maxima, Murano, Pathfinder, Skyline, Stagea
Engine: VQ25DE, VQ35DE- 2.5L, 3.5L Petrol
Position: Right Hand Bank



RCP1076

Model: 350Z, Altima, Elgrand, Maxima, Murano, Pathfinder, Skyline, Stagea
Engine: VQ25DE, VQ35DE- 2.5L, 3.5L Petrol
Position: Left Hand Bank



RCP1077

Model: 350Z, Altima, Elgrand, Maxima, Murano, Pathfinder, Skyline, Stagea
Engine: VQ25DE, VQ35DE- 2.5L, 3.5L Petrol
Position: Right Hand Bank



RCP1078

Model: 350Z, Altima, Elgrand, Maxima, Murano, Pathfinder, Skyline, Stagea
Engine: VQ25DE, VQ35DE- 2.5L, 3.5L Petrol
Position: Right Hand Bank

Nissan



RCP1079

Model: 350Z, Altima, Elgrand, Maxima, Murano, Pathfinder, Skyline, Stagea

Engine: VQ25DE, VQ35DE- 2.5L, 3.5L Petrol

Position: Right Hand Bank



RCP1080

Model: 350Z, Altima, Elgrand, Maxima, Murano, Pathfinder, Skyline, Stagea

Engine: VQ25DE, VQ35DE- 2.5L, 3.5L Petrol

Position: Left Hand Bank

Nissan



RCP1112 (Oil Separator)

Model: Dualis, Qashqai, X-Trail
Engine: R9M- 1.6L Diesel



RCP1113

Model: Pathfinder
Engine: VQ35DD- 3.5L Petrol
Position: Left Hand Bank



RCP1114

Model: Pathfinder
Engine: VQ35DD- 3.5L Petrol
Position: Right Hand Bank

PSA Group



VC012 (PSA, Ford, Volvo, Mini)

Model: Ford Fiesta, PSA C4, Mini Cooper D, Volvo C30, V40
Engine: HHJC/E, TZJB, DV6TED/4, W16D16, D4162T- 1.6L Diesel



VC017

Model: C3
Engine: DV4TD- 1.4L Diesel



VC018

Model: C3
Engine: DV4TD, DV4TED- 1.4L Diesel



RCP1046

Model: C4, DS3/4, 207/8, 308, 5008, RCZ
Engine: EP6CDTX, EP6DT- 1.6L Petrol

Toyota



RCP1005

Model: Fortuner, Granvia, Hi-Ace, Hilux, Prado, Landcruiser
Engine: 1GD-FTV 2.8L, 2GD-FTV 2.4L Diesel



RCP1006

Model: Hilux
Engine: 1KD-FTV 3.0L, 2KD-FTV 2.5L Diesel



RCP1039

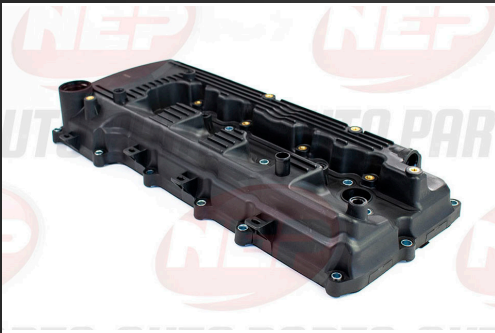
Model: Hi-Ace, Prado
Engine: 1KD-FTV 3.0L, 2KD-FTV 2.5L, Diesel



RCP1007

Model: Hi-Ace, Hilux,
Engine: 1TR-FE 2.0L, 2TR-FE 2.7L Petrol

Toyota



RCP1008

Model: Hi-Ace, Hilux

Engine: 1TR-FE 2.0L, 2TR-FE 2.7L, Petrol



RCP1009

Model: Hi-Ace, Hilux

Engine: 1TR-FE 2.0L, 2TR-FE 2.7L, Petrol



RCA2004

Model: Hi-Ace, Hilux, Prado, Regius

Engine: 1KZ-TE 3.0L Diesel

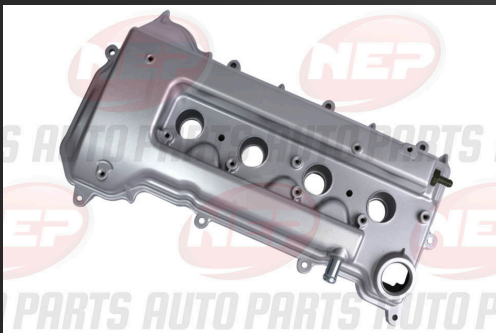


RCA2006

Model: Coaster, Landcruiser

Engine: 1HD-FT, 1HD-FTE 4.2L Diesel

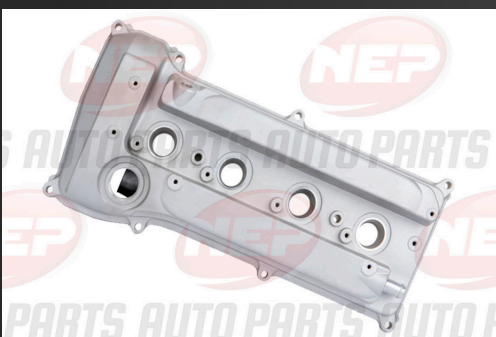
Toyota



RCA2007

Model: Corolla, MR2

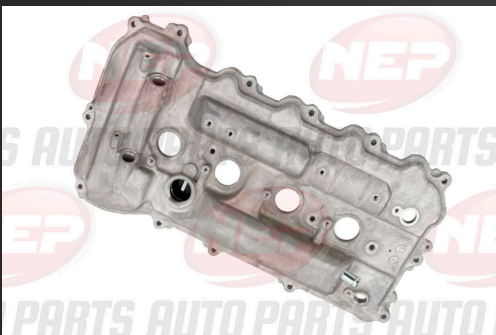
Engine: 1ZZ-FE- 1.8L Petrol



RCA2008

Model: RAV4, Alphard, Avensis, Camry, Estima, Rukus, Tarago

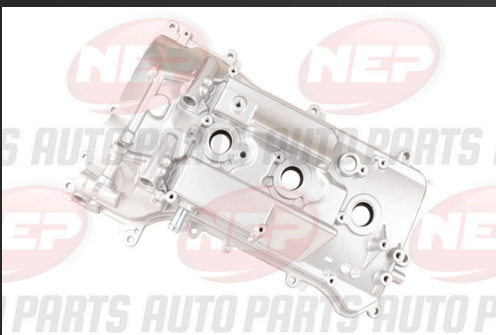
Engine: 1AZ-FE, 2AZ-FE- 2.0L, 2.4L Petrol



RCA2009

Model: RAV4, Alphard, Avensis, Camry

Engine: 2AR-FE- 2.5L Petrol



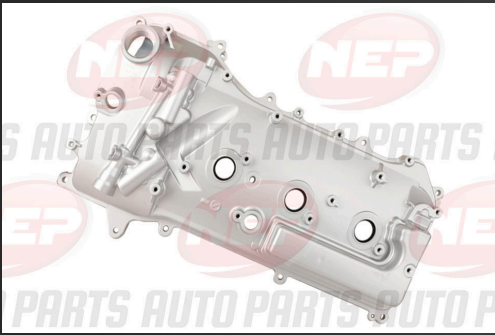
RCA2010

Model: Alphard, Aurion, Estima, Kluger, RAV4, Tarago

Engine: 2GR-FE- 3.5L Petrol

Position: Right Hand Bank

Toyota



RCA2011

Model: Alphard, Aurion, Estima, Kluger, RAV4, Tarago

Engine: 2GR-FE- 3.5L Petrol

Position: Left Hand Bank

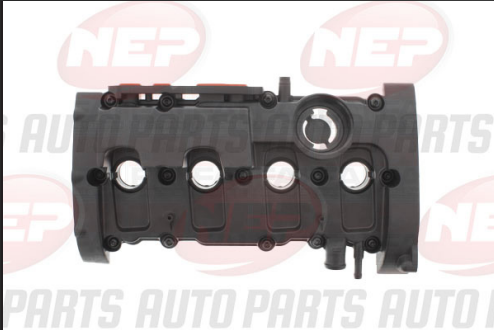


RCA2012

Model: Corolla, RAV4

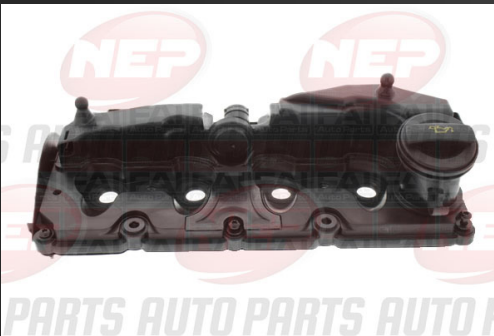
Engine: 2ZR-FE, 3ZR-FE- 1.8L, 2.0L Petrol

VAG Group (Audi/Volkswagen)



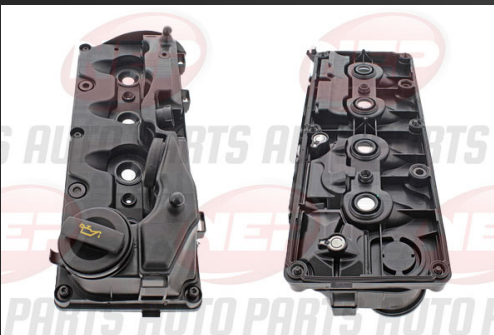
VC023

Model: A4,A6- 2.0L, TFSI, Petrol
Engine: BGB, BPJ, BUL, BWE



VC024

Model: Caddy, Golf, Jetta, Polo, Touran, 1.6L, TDI, Diesel
Engine: CAYB, CAYB, CAYD



VC025

Model: Caddy, Eos, Golf, Jetta, Passat, Polo, Sharan, Tiguan,
Touran 1.6L, TDI Diesel
Engine: CAYB/C/D, CFFB, CFGB/C, CFHC, CLJA



VC027

Model: A4,A5,A6, Q5- 2.0L, TDI Diesel
Engine: CGLB, CGLC, CJCB

VAG Group (Audi/Volkswagen)



VC028

Model: A3, Q2, Golf, Passat, Tiguan- 2.0L TDI Diesel
Engine: CLHA, CRBC, CRKB, CRLB, DFCA, DFGA



VC034

Model: Bettle, Caddy, Golf, Jetta, Passat, Polo, Touran - 1.9L Diesel
Engine: ATD, AXR, BJB, BKC, BLS,BSW, BXE



VC038

Model: Eos, Golf, Passat, Tiguan- 2.0L, TDI Diesel
Engine: CBAB, CBBB

VAG Group (Audi/Volkswagen)



VC020

Model: 118i, 120i, 318Ci, 318Ti, 320i, X1, Z4
Engine: N46B20



RCP1086

Model: A4, A5, A6, A7, A8, Q5, Q7, SQ5, Touareg- 3.0L TDI
Diesel
Engine: CDTA, CDUC/D, CGQB, CJMA, CLAA/B, CRCA, CT-
BA/B, CVUA/B, CVVA
Position: Right Hand Bank (Cyl 1-3)



RCP1087

Model: A4, A5, A6, A7, A8, Q5, Q7, SQ5, Touareg- 3.0L, TDI
Diesel
Engine: CDTA, CDUC/D, CGQB, CJMA, CLAA/B, CRCA,
CTBA/B, CVUA/B, CVVA
Position: Left Hand Bank (Cyl 4-6)

Ford/Mazda



IMP1000 (Ford/Mazda)

Model: Ranger, Mazda BT50

Engine: P5AT- 3.2L Diesel



IMP1001 (Ford/Mazda)

Model: Ranger, Mazda BT50

Engine: P4AT- 2.2L Diesel

Holden



IMP1002

Model: Barina

Engine: A14NET- 1.4L Petrol



IMP1003

Model: Cruze

Engine: A14NET- 1.4L Petrol

Jeep/Chrysler



IMP1004

Model: Grand Cherokee, 300C

Engine: EXF- 3.0L Diesel