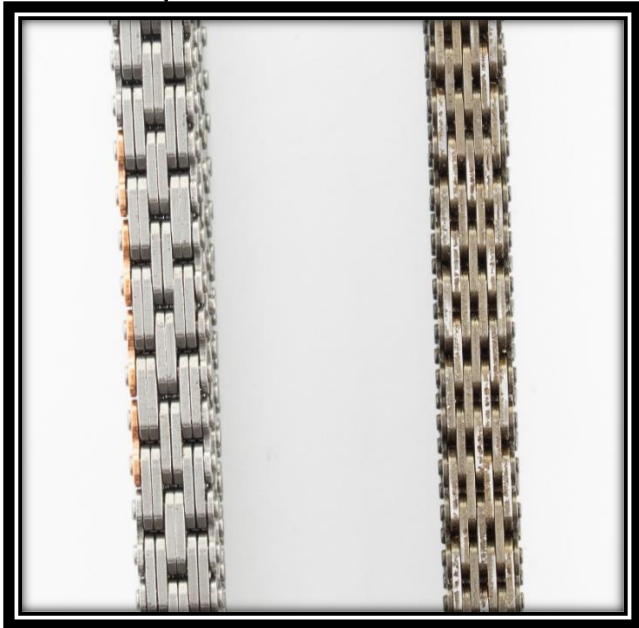


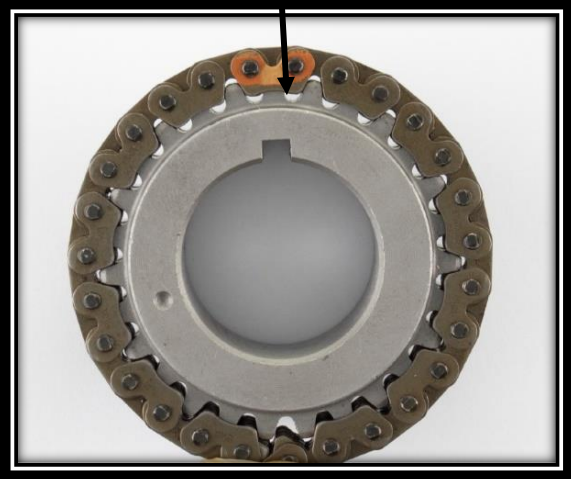
Nason Part # NTC1200 & MBTK51

New OEM design including eight plate wide & twin plate construction:
Nason Part # NTC1200

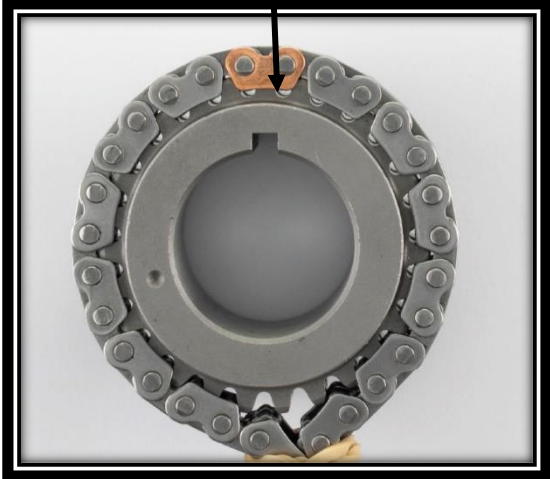
Superseded OEM design including nine plate wide & single plate construction



OEM chain: Note the installed chain position, **NOT** seated on the base of the gear



NTC1200: Note the installed chain position, as per the OEM chain



NTC1200 is a direct replacement for the superseded chain