



## Engine Reconditioning Consumables

Tools

Workshop Supplies

**February 2015**



Phone 1300 662 766

Fax 1300 762 766



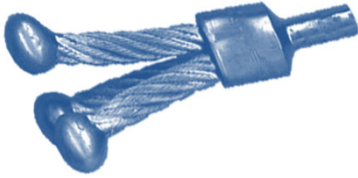
# INDEX

<i><b>DESCRIPTION</b></i>	<i><b>PAGE</b></i>	<i><b>DESCRIPTION</b></i>	<i><b>PAGE</b></i>
Assembly lube / Grease	33,34,35	Glass Beads	17
Bags crank / heads	13	Gloves , Hot Tanks / Glass Bead Cleaning	17
Baskets, parts Cleaning	17	Heat Shield Material	32
Belts, Polishing	14	Heat Tabs & Adhesive	32
Bolt Engine Assembly	32	Hone Small Engine / Hone Stop	14
Bolt Lubricant	33	Honing Stones	13
Brass Shim	29	Honing Oil	16
Brass tags	29	Hylomar Products	11
Brushes	2	Leak Stopper / Sealwel / Seal tite	12
Cartridge Rolls	4	Oil Gallery Brushes	3
Chamfering Tool	20	Paints	5 , 10
Crack Test Powder	20	Plateau Brushes	13
Crankshaft Polisher	14	Piston installation Hammer	18
Con Rod Bolt Sleeves	32	Piston Ring Compressors	18
Cylinder Hone	14	Piston Ring filer	18
Cylinder Head Dowel Kit	23	Port & Polish Brushes & Kits	2
Cylinder head Stand	18	Push Rod Length Checker	32
Diamond Dresser	20	Ridge Remover	18
Dowel Puller	18	Seal lock Fluid Weld	12
Driven / Joe Gibbs Products	33	Sleeve Con Rod Bolts	32
Engine Cleaning Brushes	3	Stretch Bolt Indicator	18, 20
Engine Oil Additives	33	Stud Remover Tool	19
Engine Paints	5, 10	Three Bond Products	21
Engine Cylinder Sleeves	24	Tube Dispensing Tool	20
Engine identification Tags	29	Valve Guide punch Tool	23
Epoxy Putty Dynagrip	12	Valve Lapping Sticks	19
Flap Wheel	4	Valve Seat Inserting tool	23
Flex Hones	15	Valve Spring Compressor's	19
Flywheel Grinding Coolant	20	Valve Stem Install kit	23
Ford Fuel Pump Eccentric Kit	20	Valve Stem Seal Pliers	19
Gasket Material Packs	27	Vibra -Tite Products	30

# BRUSHES

## Carbon Removal Brush

1/2" Ball , 5/16" Cable Cobalt tip  
B3092



A

## Hollow / Flared End Brushes

STYLE	DIA	WIRE	PART #
B	1-1/2"	.020	B3083
A	2-3/4"	.0118	B3086



B

## Port & Polish Brushes

X- BUFFS ( Box Of Ten )

DIA	2-PLY FINISH	PART #
3/4 "	MEDIUM	2720
1"	MEDIUM	2722
1-1/2"	MEDIUM	2724
	<b>3-PLY HEAVY DUTY</b>	
1-1/2	MEDIUM	2726
1-1/2	VERY FINE	2727



## Port & Polish Kit

Master Kit 56 pc 2587DX  
With Case



## Tight Area End Brushes



## Port Brushes

4 " X 1/4 INCH	B3093
4 " X 3/8 INCH	B3094



6 " X 1/4 "	B3090
6 " X 3/8 "	B3091

## Aluminium Crimped

Length	Duty	Wire size	Part #
3/4"	STD	.006	B3066

## Knotted Cup Brush 4"

B3051



## Non Spark Crimped

Length	Duty	Wire size	Part #
3/4"	STD	.010	B3120
1 "	STD	.010	B3121

## Cast iron Knotted

Length	Duty	Wire size	Part #
3/4"	Severe	.014	B3076
3/4"	Extreme	.020	B3084
1-1/8"	Severe	.014	B3075
1-1/8"	Extreme	.020	B3082



# BRUSHES

## Nylon Oil Gallery Brush Kit (5 Pc.) B3049

Kit Includes:

3/8" X 3" X 34"  
1/2" X 2-1/2" X 34"  
5/8" X 3" X 34"  
3/4" X 3" X 34"  
3/4" X 3" X 40"



## Nylon Oil Gallery Brushes & Valve Guild Brushes & Kit

Nylon 1/4 Inch Diameter	B3019
Nylon 5/16 Inch Diameter	B3020
Nylon 11/32 Inch Diameter	B3021
Nylon 3/8 Inch Diameter	B3022
Nylon 3/4 Inch Diameter	B3039
1/2" X 34" Oil Gallery Brush	B3045

**Set Of 6 Brushes B3025**

B3025



## Engine Cleaning Brush Kit B3049DX



10 Pc kit contains all the necessary brushes needed for a typical rebuild  
Kit includes the following,

KIT CONTAINS	BRUSH TYPE	PART #
3/8" X 34"	Oil Gallery Brush	B3044
1/2" X 34"	Oil Gallery Brush	B3045
5/8" X 34"	Oil Gallery Brush	B3046
11/32"	Valve Guild Brush	B3021
3/8"	Valve Guild Brush	B3022
4"	Cyl Wash Brush	B3202
	Lifter Bore Brush	B3038
	Parts Cleaning Brush	B3062
1/4"	Feed hole Brush	B2951
5/16"	Cam brush	B3041

## Cylinder Washing Brushes

Nylon bristled brushes are designed to efficiently clean the cylinder walls after honing. Use with warm water and detergent.

DIA	PART #
3-1/2"	B3200
4.00"	B3202
4-1/2"	B3204
5.00"	B3206



## CARTRIDGE ROLLS

### Straight Cartridge Rolls

1/8" hole Box of 50

Dia / Length	Grit	Part #
1/4" x 1-1/2"	40	2602
1/4" x 1-1/2"	80	2606
1/4" x 1-1/2"	120	2607
3/8" x 1"	40	2609
3/8" x 1"	80	2611
3/8" x 1"	120	2612
3/8" x 1-1/2"	60	2614
3/8" x 1-1/2"	80	2615
3/8" x 1-1/2"	120	2616
3/8" x 1-1/2"	320	2732
1/2" x 1-1/2"	60	2619



### Full Taper Spiral Cartridge Rolls

1/8" hole Box of 50

Dia / Length	Grit	Part #
3/8" x 1-1/2"	120	2736
1/2" x 1-1/2"	80	2589
5/8" x 1"	80	2688



### Half Taper Spiral Cartridge Rolls

1/8" hole Box of 50

Dia / Length	Grit	Part #
3/8" x 1"	80	2683
3/8" x 1-1/2"	80	2742
3/8" x 1-1/2"	120	2743
1/2" x 1-1/2"	80	2746



### Mandrels 1/4" Shank

For 1/8" Hole Cartridge Rolls

Use on	OAL	PILOT LENGTH	PART #
1" Roll	6"	3/4"	2751L
1" roll	2-1/2"	3/4"	2751
1-1/2" roll	6"	1"	2713L
1-1/2" roll	2-3/4"	1"	2713
2" roll	6"	1-1/2"	2712L
2" roll	3-1/4"	1-1/2"	2712



Items in bold are stocked others are indent items



### Mounted Flap Wheel

1 Pc. Mounted Flap Wheel, 1" Dia. x 1"L., 120 Grit, 1/4" Straight Shank.

# 2592

**Can't See What You Need ?**  
Please Refer To The Sliver Seal Catalog  
For More Shop Tools And Workshop  
Supplies

# PAINTS AND CHEMICALS



**VHT Brake, Caliper, Drum and Rotor Paint** has been specifically designed for the custom detailing of brake components. It is heat resistant to 900°F (482°C) and will not chip, crack, fade or rust even under extremes of operation or road and weather conditions. It is easy to apply, dries quickly, and is remarkably resistant. Careful preparation is essential. Brake fluids are often very difficult to remove; VHT Caliper Cleaner (SP700) is ideal for this task.

## Colours available:

SP700	Cleaner	SP733	Real Orange	SP736	Gold
SP730	Clear	SP734	Gloss Black	SP738	Bright Yellow
SP731	Racing Red	SP735	Cast Aluminium	SP739	Satin Black
SP732	Bright Blue				



**VHT Wheel Paint** provides a great finish and real protection for all standard and custom wheels. Even on highways, wheels take a beating. Salt, sand, brake dust and rocks severely damage the appearance and protection of the wheel surface. This unique product resists chipping, cracking and fading, while protecting the wheel surface from oxidation, and is available in six popular colours plus clear coat.

## Colours available:

SP181	Aluminium	SP184	Clear Coat	SP187	Gloss Black
SP183	Satin Black	SP186	Rally Silver	SP189	Graphite



**VHT Wrinkle Plus** combines strong colours with a deep rich texture for a custom look. It is temperature resistant to 350°F (176°C) and is ideal for adding a touch of personal styling to almost any metal surface. VHT Wrinkle Plus resists colour fading, grease, degreasers and severe weather conditions. This tough durable finish is extremely resistant to rust, corrosion, chipping and cracking.

## Colours available:

SP201	Black	SP204	Red
-------	-------	-------	-----



**VHT Chrome Plus** is a unique quick drying formulation specifically created for application on metal, glass, wood or sealed plaster surfaces. This non-tarnishing epoxy finish has outstanding brilliance and corrosion resistance. VHT Chrome Plus is easy to use and dries in minutes. Excellent for touch-up, refinishing and decorative applications. Warning: Do not use any clear coat finish over these products.

<b>Colours available:</b>	SP5251	Chrome
---------------------------	--------	--------

# PAINTS AND CHEMICALS



**VHT Penetrating Colour Dye** for vinyl and carpeting is a one-step process that restores or changes the colour of any vinyl upholstery, seats and trim, or the “short nap” carpeting found in today’s cars, boats and watercraft. It is ideal for use on stiff or pliable vinyl, simulated leather or plastic. VHT Penetrating Colour Dye is not a paint but a true dye which permanently changes the colour of the substrate. It is extremely resistant to cracking or fading. Careful preparation is essential and all traces of dirt, silicone products, vinyl and rubber protectants, oils and greases must be removed. Incomplete preparation will not produce a satisfactory result. Warning: It is not suitable for use on cloth or fabrics.

## Colours available:

SP941	Gloss Jet Black	SP949	White Satin
SP942	Black Satin	SP950	Dark Blue Satin
SP943	White Satin	SP953	Light Grey Satin
SP944	Buckskin Tan Satin	SP954	Charcoal Grey Satin
SP946	Silver Satin	SP961	Desert Sand
		SP962	Red



**VHT Quick Coat Enamel** is a premium quality coating which provides extra hide and durability for interior or exterior applications. This tough and durable coating prevents rust and corrosion on properly prepared surfaces, is fast drying, lead free and ozone safe. VHT Quick-Coat Enamel provides a rich weather resistant gloss finish to wood, metal, sealed plaster and masonry surfaces.

## Colours available:

SP501	Fire Red	SP508	Bright Yellow	SP515	Clear
SP503	Bright Orange	SP509	Gloss White	SP525	Silver Chrome
SP504	Gloss Black	SP510	Flat Black	SP527	Satin Black
SP505	Ocean Blue	SP512	Forest Green	SP551	Dark Metallic Grey
SP507	Bright Aluminium			SP513	Machinery Grey



**VHT Prime Coat** is an excellent foundation for any enamel, epoxy, acrylic or synthetic lacquer. It provides a tough, air dry base coat with excellent adhesion to intermediate and top coatings. VHT Prime Coat is specially formulated to fill scratches or pin holes caused by sanding or body fillers to form a strong corrosion barrier. It is a multi-purpose product, and can be used on metal, fibreglass, masonry, wood and most plastic surfaces. It is ideal for automotive, marine, aviation, home, farm and industrial use.

## Colours available:

SP301	White	SP303	Red Oxide	SP305	Black
SP302	Dark Grey	SP304	Light Grey	SP306	Zinc Chromate

# PAINTS AND CHEMICALS



**VHT Flameproof** Coating will renew and extend the life of any surface exposed to extremely high temperatures. This unique coating is a matte finish, ceramic base silicone widely used by the automotive industry on exhaust systems and the aerospace industry for jet engines, re-entry vehicles, the Stealth fighter, B-2 bomber and other high temperature applications.

**VHT Flameproof** Coating will withstand temperatures up to 1500°F (815°C) and is ideal for use on boilers, hot water pipes, exhaust systems, franklin stoves, heaters, barbecues, furnaces or wherever an extreme temperature coating is needed (\* indicates colours that may fade at 1200°F/648°C). VHT Flameproof Coating only attains its unique properties after correct curing (refer to the instructions on the can).

## Colours available:

SP101	Flat White	SP108	*Flat Yellow	SP115	Clear
SP102	Flat Black	SP109	*Flat Red	SP117	Flat Aluminium
SP104	Flat Grey	SP110	*Flat Blue	SP118	White Primer
SP106	Flat Silver	SP114	*Flat Orange		



**VHT Nu-cast Manifold Coating** is a unique formula developed to restore OEM parts to their original newly cast appearances.

VHT Nu-Cast 1500°F (815°C) Cast Iron Manifold Coating (SP998) has all of the performance qualities of standard VHT Flameproof Coatings.

## Colour available:

SP998          Grey



**VHT Epoxy Paint** is a one-step epoxy ester resin which does not require the use of a primer. It has been formulated to give the appearance and durability of a baked-on finish. It provides a porcelain-like finish that is chemical, corrosion, rust and salt resistant.

## Colours available:

SP670          Gloss Black  
SP671          Satin Black



## VHT Hood and Bumper Paint SP27

accents the latest automotive styling and matches original factory equipment. This satin black urethane coating is extremely flexible, yet resists chipping and fading. The easy to use spray application creates a tough durable finish with excellent mark and scratch resistance.



## VHT Adhesive Promoter SP440

is a quick drying clear primer formulated to improve paint adhesion to all automotive surfaces. This formula creates an added bond on problem surfaces. Ideal for use on plastics, vinyls, chrome, galvanised bare and painted metal, aluminium and fibreglass.



## VHT Self-Etching Primer SP307

This product should be used as the first step in priming bare metal, aluminium and fibreglass. It is corrosion resistant, provides maximum adhesion and is fast drying.



# PAINTS AND CHEMICALS



**VHT 550°F (287°C) Engine Enamels** are available in a wide range of colours, including exact match factory colours. All colours have excellent durability and superior heat and solvent resistance. They are specially formulated to withstand corrosion, rust, salt spray, strong solvents and additives of today's gasoline blends and degreasers. VHT 550°F (287°C) Engine Enamels are a unique blend of urethane resins which produce a tough and long-lasting finish for engines, engine accessories or wherever a tough durable heat or chemical resistant finish is needed. Ideal for use on engines, heat registers, hot pipes, farm and garden equipment, boats, motorcycles and watercraft.

## Colours available:

SP119	Holden Orange	SP130	Flat Black	SP153	Old Ford Blue
SP1202	Holden Blue	SP131	Ford Green	SP154	Grabber Green
SP120	Chrysler Hemi-Orange	SP132	Universal Gold	SP155	Chrysler Red
SP121	Bright Red	SP134	Ford Light Blue	SP29	Motor Brite—Clear
SP122	Pontiac Blue	SP135	GM Blue	SP755	Ford Competition Blue
SP123	Chevy Orange	SP137	Ford Grey	SP760	Kermit Green
SP124	Gloss Black	SP138	New Ford Blue	SP756	Hot Pink
SP125	Ford Dark Blue	SP139	GM Satin Black		
SP126	Early Chrysler Blue	SP145	Clear		
SP127	Universal Aluminium	SP148	Light Grey Primer		
SP128	Gloss Yellow	SP151	Racing Green		
SP129	Gloss White	SP122	Ford Red		



**VHT Nu-Cast Engine Enamels** are unique formulas developed to restore OEM parts to their original newly cast appearances. These Cast Aluminium and Iron Grey coatings withstand temperatures to 500°F (287°C) and are extremely resistant to chemicals, salt, corrosion and rust.

## Colours available:

SP995	Cast Aluminium
SP997	Cast Iron Grey



**VHT Metallic Engine Enamels** 343°C (650°F). These unique high temperature engine enamels are chemical resistant coatings.

## Colours available:

SP401	Fire Red	SP403	Titanium Silver
SP402	Burnt Copper	SP404	Gold Flake
		SP405	Black Pearl

# PAINTS AND CHEMICALS



**VHT Nite Shades Red SP888** is a translucent red lens coating that is designed to customise or restore vehicle lenses. It is ideal for tail lights or turn indicators. Recommended for off road use only. **Warning:** once applied to plastic lens, SP888 is not able to be satisfactorily removed.



**VHT Nite Shades SP999** is a transparent black tail light lens coating for creating a custom European styling. When applied to tail lights, fog lights or turn indicators, VHT Nite Shades appears black until they are lit, then the natural red colour appears. Recommended for off road use. **Warning:** Once applied to plastic lens, SP999 is not able to be satisfactorily removed. Recommended for off-road use.



**VHT Anodised Colour Coat** is formulated for high temperature and high performance applications ideal for an anodised colour effect over chrome and other shiny metal surfaces.

**Colours available:**

SP450	Red
SP451	Blue
SP452	Purple
SP453	Base Silver



**VHT Epoxy Paint Rust All**

Weather contains a one-step Epoxy Ester resin which dries in minutes to provide an exceptional rust and corrosion resistant finish. The rust inhibitors which are added to this already fortified resin produce a rust proof barrier when applied to new or properly prepared metal substrates. VHT Epoxy Paint — Rust All Weather is tough enough for industrial use yet safe enough for children's toys. It can be used interior or exterior. No primer is required.

**Colours available:**

SP650	Gloss Black
SP651	Gloss White
SP652	Satin Black



**VHT Copper Gasket Cement SP21A** maintains excellent adhesion under severe pressure and heat fluctuations. This high metallic formula assures tight seals on cork, paper and metal gaskets. VHT Copper Gasket Cement has been extensively tested on racing engines in the field and on dynamometers, where it has met and exceeded the high compression requirements of super-powered engines. It also is an excellent seal for threaded fittings and pressure hose connectors.



## PAINTS & CHEMICALS



### ENGINE ENAMEL

AerVOE Industries Inc.

Specially formulated to keep engine surfaces from pitting and rusting while maintaining color and a performance gloss finish. Specially made for refinishing engines and transmissions Withstands temperatures up to 500°F (260°C) Fast drying Matches O.E.M. standards Oil and gas resistant Provides superior durability and fade resistance under harsh conditions

- SP121N Ford Bright Red
- SP123N Chevy Orange
- SP124N Gloss Black
- SP125N Ford Dark Blue
- SP126N Early Chrysler Blue
- SP127N Universal Aluminium
- SP129N Gloss White
- SP130N Flat Black
- SP131N Ford Green
- SP132N Universal Gold
- SP134N Ford Light Blue
- SP135N GM Blue
- SP137N Ford Grey
- SP139N GM Satin black
- SP145N Clear
- SP997N Cast iron Grey



### Zynolyte® Hi-Temp Paint

Provides a lasting finish that is resistant to very high surface temperatures. Withstands temperatures up to 1200°F (538°C) Fast drying Hard, durable finish Excellent rust and corrosion resistance Indoor/outdoor

Once cured, will not chip, peel, discolour, or chalk



- SP101N Flat White
- SP102N Flat Black
- SP104N Flat Grey
- SP117N Flat Aluminium

- 887 Welding Anti Spatter
- 937 Tef-lube Lubricant With Ptfе
- 7020 Cutting Oil Solvent Based
- 8079 Drive Belt Dressing
- 6090 Prussian Blue High Spot Indicator
- 6005 Battery Terminal Coating
- 6001 Toolmakers Ink Blue
- 6095 Toolmakers Ink Remover



- 8078 General Purpose Graphite Lube
- 8034 General Purpose Silicone Lube
- 403 Insulating Epoxy Clear
- 7340 Wet Lubricants **Same As WD40**
- 6080 Dry Moly Lubricant
- 6030 Penetrating Oil
- 9106 Tap Tool Synthetic Lubricant

# HYLOMAR®



## HyloMAR® M

The original and genuine non-setting gasket and jointing compound specified by OEM's around the world.  
Manufactured under licence from Rolls-Royce  
Dichloromethane free  
Wide operating temperature range (-50 to +250°C)  
Fuel resistant

**Pack sizes – 40ml tube (blister card), 80ml tube (carton), 200ml aerosol, 250ml brush-top tin**

## PL32 AEROGRADE

The original non-setting gasket & jointing compound approved by Rolls-Royce and NATO. 100gm Tube

**Part # HYL 100**



## Hylo® Clean

HYLO®CLEAN is a specially blended cleaning fluid that is highly effective at removing used HyloMAR jointing compound from disassembled joint surfaces. The unique mix of solvents also make it perfect for cleaning and degreasing surfaces prior to use with any of HyloMAR's range of adhesives and sealants. HYLO®CLEAN is also very effective at removing uncured anaerobic, uncured silicone and uncured epoxy products.

HYLO®CLEAN can be used for:

Removing HyloMAR M, HyloMAR Universal Blue, HyloMAR AF and HyloMAR AeroGrade, uncured HYLO®GRIP anaerobic products, uncured HYLO®BOND epoxy and acrylic adhesives and HyloTYPE® Red  
Degreasing metal components – will remove most oils, lubricating fluids, metal cuttings and dirt from any metal surface

HYLO®CLEAN does not leave a residue and evaporates quickly after application

**Pack sizes – 400ml aerosol**

**PART NUMBER # HYLOCLEAN**



## HyloTYPE® Red 100

HyloTYPE® Red 100 is a synthetic, semi-hardening jointing compound that has excellent gap filling properties. The product is resistant to a wide range of fluids, especially water (including salt water and steam), anti-freeze, and synthetic oils.

Highly resistant to steam and hot water

Based on new synthetic polymer technology

Forms an instant seal

Heat activated curing system

Excellent resistance to automotive fluids

Improved gap filling – useable on rough machined and pitted surfaces

Inhibits galvanic corrosion between dissimilar metals

Methylene chloride free

**Pack sizes – 40ml tube (blister card) & 80ml tube (carton)**

**40ml Tube Part # HYL40R**

**80ml tube Part # HYL80R**



## The "Original" Radiator Leak stopper (Hanging Display, 24 Tubes)



### Part # HU24

24 Tubes, Hanging Display - Leak Stopper is a metallic sealer with a carrying agent that stays in suspension until carried to the leaking area. Metallic particles seal leaks when exposed to air. Ten minutes of engine operation completes the sealing cycle. A profitable year-round seller. Trusted by Millions for Decades!

### Part # 30333

#### Seal-Lock Fluid-Weld (2 oz. Bottle)

Seal-Lock Fluid-Weld withstands temperatures up to 3000 Deg. F.! Repairs fine cracks, pin holes, and porosity in cast iron or aluminium heads and blocks. Improves sealing ability of crack repair plugs and pins. Seals injector tubes, gaskets, freeze plugs, etc. Superior lubricating ability eases installation of valve seat inserts, valve guides, sleeves, and other pressed fit parts.



### Part # 16002

#### DYNAGRIP EPOXY PUTTY

Mixes like putty, bonds like epoxy, hardens like steel. 266C Temperature Resistant  
3 year Shelf life. 56Gm Tube  
Permanently bonds to; Copper, Steel, PVC, Fiberglass, plastics, Glass Ceramics, Wood Ect.



### Part # 1008

#### DYNAGRIP METALLIC SEAL-TITE

( FORMALLY CARGO SEAL-UP )



#### SEALWEL COOLING SEALANT AND CLEANER

##### WHAT DOES SEALWEL DO?

Seals leaks in radiator systems:  
prevents coolant loss reduces engine damage  
seals oil to water leaks  
seals internal and external leaks Cleans cooling systems: removes deposits and rust  
improves coolant circulation won't clog Sealwel Lubricates bearings:  
reduces wear on pump bearings keeps thermostats & heater valves working  
Packet of 32 tabs

### Part # T5101-32





# WORK SHOP

## Head & Crankshaft Bags

4587

Measures 10 " x 8" x 36" To fit most cylinder heads and crank shafts, Clear Virgin Poly Plastic 3 mil Thick With imprint area for you to mark part # Roll of 100



Designed to produce a finish that rivals a perfectly " broken in " engine which will minimize initial wear on piston rings.

- . Removes loose, fractured and torn fragments of metal
- . 15-20 strokes per cylinder provides a superior finish
- . As bush wears down , it can be used on smaller bores

## Plateau Brushes

DIA	BORE SIZE	PART #
2-1/2"	1-3/4"-2-1/4"	UFB250
3"	2-1/4"-3-3/4"	UFB300
4"	3"- 3-1/2"	UFB400
4-1/2	3-1/2 " - 4.00	UFB450
5"	4"-4-1/2"	UFB500

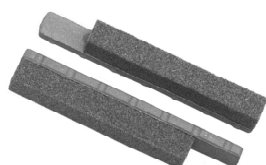


## Honing Stones

### FOR PORTABLE AND POWER HONES

Use with Sunnen AN type hones and many other popular models, Integral style holder sets include 2 holder with stones and 2 holders with aluminium wipers

BORE RANGE	APPLICATION	ROUGHING 70 GRIT	MEDIUM 150 GRIT	FINISHING 220 GRIT	FINE FINISH 280 GRIT	X-FINE FINISH 400 GRIT
2.7'-4.1'	CAST IRON	SAN 100	SAN 200	SAN 300	SAN 500	SM27J87
3.5'-5.5'	CAST IRON	SAN 101	SAN 201	SAN 301	SAN 501	SN37J87



80072

## Honing Stones & Shoes

For Sunnen CV-616 & CK 10

STONES		
APPLICATION	SUNNEN #	PART #
Roughing	EHU-133	80072
Hard blocks	EHU-518	80073
General purpose	EHU-525	80082
finishing	JHU-625	80102
SHOES		
Wear shoes	CK3070	80981
Alignment Shoes	CK3120	80982



80981

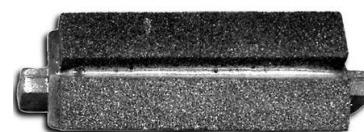
SAN 201



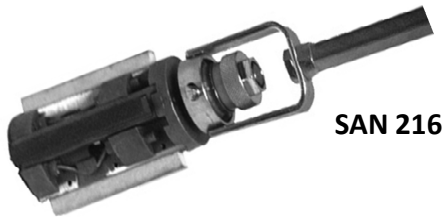
### Rod Honing Stone

(Finishing, For Con-Rod CR-1900 CR4500 Mandrel Sunnen # CR-14 )

# 80030



## Small Engine Portable Cylinder Hone



SAN 216

1.75" to 2.75 " bore 180 Grit Finishing  
Set Consists of 3 stones all 180 grit  
Sizes of stones are 1.75" to 2.20", 2.20" to 2.50"  
and 2.35" to 2.75"

RANGE	DRIVE SHAFT DIA	SHAFT LENGTH	PART #
1.75 – 2.75	1 / 2"	6.00 "	SAN216

## Portable Air Crankshaft Polisher Part # 3144

(64" - 72" Belt Length)

Adjustable Portable Air Crankshaft Polisher will adjust to belt lengths from 64" to 72". Features a high torqued output 11,000 RPM air motor. Lightweight alloy frame (weighs only 9 lbs). Polisher is balanced for extended use. Supplied with 1" rollers, optional 2" wide rollers also available.



## Crankshaft Polishing Belts

### Premium Crankshaft Polishing Belts

10 Per Box Aluminum oxide grain, specially treated for long life. Triple flex cotton blue backing for proper edge roll, 2 layer premium resin over resin bond. This, coupled with the correct grit selection, will provide the best possible finish

LENGTH	WIDTH	240G	320G	400G
64"	¾"			3051
64"	1"			3042
66"	1"			3166
72"	1"			3065

## Hone Stop Assembly

4741

Features rubber collar to prevent damage to the block  
½" Bushing I.D



## Small Engine Cylinder Hone Stones



Stone sets fits SAN216 and consist of 2 stones and 2 wipers. Stones are 3-1/2" long

CYLINDER SIZE RANGE	280 GRIT
1.75" – 2.20"	SAN 614
2.05" – 2.50"	SAN 616
2.35" – 2.75"	SAN 618

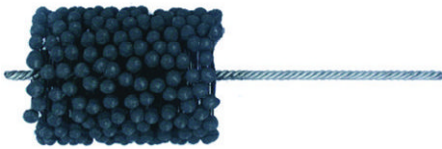


Part # 3144

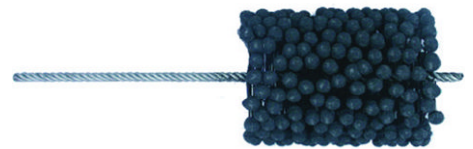
## Sky-Blue Premium Crankshaft Polishing Belts

10 Per Box. Top quality belt boasts a Sky-Blue backing that readily conforms to journal radii. Exceptionally high grade Aluminum-Oxide grains are bonded to this flexible material, along with an active lubricant which reduces grinding heat, also extending belt life.

LENGTH	WIDTH	320G	400G
64"	¾"		3366
64"	1"		3367



# FLEX HONES



All flex-hones tools produce a conditioned surface finish. These unique hones use a low temperature low pressure abrading system that produces a clean, long wearing surface. Designed to create a crosshatched surface pattern for oil retention. The silicone carbide hones are attached to flexible nylon stems that allow the hones to float, thereby assuring self alignment to bore. They produce a soft cutting action. Use with 10-30wt. Motor oil or honing oil (applied sparingly to bore wall ) Operate hone for 10-45 Seconds . Repeat until desired surface finish is achieved.

Flex-Hones are supplied in silicone carbide as standard.

## SILICONE CARBIDE FLEX HONE

### FOR FINISHING

*Low carbon steel*

*Stainless steel*

*Cast iron*

*Aluminium*

*Bronze*

## ALUMINUM-OXIDE FLEX HONE

### FOR FINISHING

*Alumium*

*Brass*

*Bronze*

*Copper*

## Aluminum Oxide

For **NICASIL**

SIZE	MM	OAL	PART #
2.1/4"	57.2	8"	4101NC
2.1/2"	63.5	8"	4103NC
3"	76.2	8"	4106NC

## Valve Guide

240 GRIT

HONE SIZE	SIZE METRIC	PART #
13/64"	5MM	4173
9/32"	7MM	4161
5/16"	8MM	4162
11/32	9MM	4163

## Lifter bore

180 GRIT

HONE SIZE	SIZE METRIC	PART #
5/8"	16MM	4121
3/4"	19MM	4123
7/8"	22MM	4124
1"	25.4MM	4125
1-1/8"	29MM	4126

## JOURNAL BORE FLEX-HONES

Journal Bore Flex-Hone for Cam Bearings

(ORDER HONE ONE SIZE LARGER THAN BORE SIZE).

These specially designed hones allow you to deburr and remove material using a low temperature abrading process. This provides a superb journal surface for both bearing insert or aluminium journal. Just the right finishing touch for a free running cam shaft. Cam Bearing Flex-Hones include a threaded pipe nipple adaptor for an extension Rod which allows you to reach each journal within the entire length of the cylinder head and engine block.

## Cam Bearing

180 GRIT

Hone Size	Metric Size	Part #
2"	51MM	4155
2-1/4"	57MM	4156

### Part # 4159

18" Extension Rod For Use With All Cam Bearing Flex Hones

## O.H.C Cam

### Journal Bore

180 Grit New Material For OHC Bearings Or Aluminium Heads

Hone Size	Metric Size	Part #
1-1/8"	29MM	QBH100
1-1/4"	32MM	QBH101
1-3/8"	35MM	QBH102
1-1/2"	38MM	QBH103
1-5/8"	41MM	QBH104
1-3/4"	45MM	QBH105

## FLEX HONES

### Honing oil

A great economical clear honing oil for all machines and general machine shop use , Easy to tell when oil is dirty and needs changing a straight cut light viscosity general purpose honing oil with no additives.



General Purpose **85005** 5 Gallons  
Honing oil **85055** 55 Gallons  
( Indent only )

### Small Engine Cylinders

Standard Duty 8" Long

HONE SIZE	SIZE METRIC	180 GRIT	240 GRIT
1"	25.4MM	4125	
2"	51MM	4100	
2-1/4"	57MM	4101	
2-1/2"	64MM	4102	
2-3/4"	70mm		4103240
3"	76MM	4104	



### Block Cylinders

Standard Duty 13-1/2" long

HONE SIZE	SIZE METRIC	BORE RANGE	120 GRIT PART #	240 GRIT PART #	320 GRIT PART #
3-1/4"	83MM	3.00"- 3.125"			4105320
3-1/2"	89MM	3.125"- 3.50"	4106		4106320
3-3/4"	95MM	3.50"- 3.750"	4107		4107320
4-1/8"	105MM	3.750"- 4.125"	4108		4108320
4-5/8"	116MM	4.125"- 4.625"	4109		4109320



### Block Cylinders & Liners

Heavy Duty

HONE SIZE	SIZE METRIC	BORE RANGE	120 GRIT PART #	240 GRIT PART #
3-1/2"	89MM	3.00"-3.50"	4112	
3-3/4"	95MM	3.25"-3.75"		4178240
4"	101MM	3.50"-4.00"		4113240
4-1/4"	108MM	3.75"-4.25"		4172240
4-1/2"	114MM	4.00"-4.50"	4114	4114240
5"	127MM	4.50"-5.00"		
5-1/2"	140MM	5.00"-5.50'		
6"	152MM	5.50"-6.00"		
6-1/2"	165MM	6.00"-6.50"		
7"	178MM	6.50"-7.00"		
7-1/2"	190MM	7.00-7.560"		

13-1/2" Long  
( Hone size 3" - 4.1/2" )  
17-1/2" Long  
( Hone size 5" - 7.1/2" )





## CLEANING PRODUCTS



### 1 Piece basket 4739

9" Diameter x 8-1/4" Long basket. A light weight steel all galvanized basket which is impervious to solvents. **Not for use with strong alkaline or caustic cleaners.** Comes complete with clips, lid, and handle.



### 2 Piece basket 4738

9" Diameter x 16" Long basket. A light weight steel all galvanized basket which is impervious to solvents. **Not for use with strong alkaline or caustic cleaners.** Although it has two halves for easy filling, it assembles quickly into a 9" Diameter x 16" long enclosed basket.



### 2 Piece basket 4738M

4-1/4" Diameter x 6-3/4" Long Medium Cleaning Basket. Durable wire mesh basket with snap lock lid.



### 4736

### 4736 Keeper Cleaner holder

Clean keepers and small parts in dip cans and parts cleaners. 1/4" holes in top and bottom allows solvent to clean parts. Made of PVC, impervious to solvents.



### Glass Bead gloves 4783

Pair of Glass Bead Gloves. 8" Port Hole Diameter, 25" Port Hole Circumference, 26" Overall Length. Fully embossed/rough hand, textured to provide a firm grip while cleaning parts. Gloves are cotton lined, finely tailored, with finished seamed cuffs, and designed to fit the following cabinets:

ABS, Aero, Clean-Peen, Econoline, Empire, Goff, Kelco, K.I., Median Blast, Pauli & Griffin, Snap-On, Trinco, Universal, Winona V.N., Zero, and others.

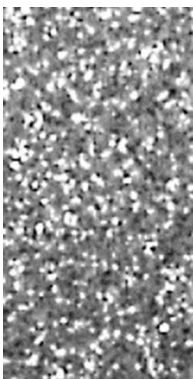
### Hot tank Gloves 4700

Pair of Hot Tank Gloves. Alkaline and oil resistant, lined for heat protection, **mid-forearm gauntlet style.** Neoprene coated.



### Hot tank Gloves 4704

Pair of Hot Tank Gloves. Alkaline and oil resistant, lined for heat protection, **shoulder-length style.** Neoprene coated.



### Glass beads 7017

For all metals, leaves a clean surface. 50 lb. pail of Glass Bead cleaning media, SAE - Standard, #60-140 Screen.

***Can't See What You Need ?***  
*Please Refer To The Sliver Seal Catalog*  
*For More Shop Tools And Workshop*  
*Supplies*

# ENGINE TOOLS

**84000**

## H.D. Cylinder Ridge Reamer

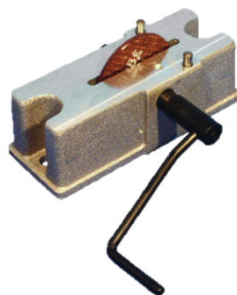
Tungsten carbide cutters remove ridges from top of cylinders. A must before replacing piston rings. For use on 3" - 5" (77mm - 127mm) cylinder diameters. Smooth cutting is assured by fine thread feeding. Changing from one cylinder to another without readjusting is easy with the three position spring loaded cutter.



**4297**

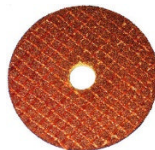
## Manual Piston Ring Filer

Manual piston ring filer enables you to assure proper piston ring end gap! Position piston ring against dowel pins and crank handle to turn filing wheel. Grind and check gap with feeler gauge to meet OE specifications.



**4297A**

## Replacement 120 Grit Grinding Wheel



**4213A**

## 9 Band Ring Compressor Kit

Ring Compressor Kit includes everything you need to allow a very fine adjustment of the band.

**Kit includes 9 bands covering from 2-1/8" to 4-3/8" plus pliers**



**Part # 100-9942**

## ARP Billet Style Stretch Bolt Gauge



**4300M**

## Metric Dowel Puller Kit (9 Pc. Kit)



**SSH8**

## Dead Blow Piston Installation Hammer

For Piston Installation. No marks, no sparks, complete protection and safety. Inner core is heat treated steel welded together and filled with just the right amount of steel shot for a sustained impact. The outer shell is made of trucoatane (custom formulated urethane) which eliminates mushrooming and is cut resistant. Handle is textured and flanged for a sure grip.

A tool you'll have for years !

## Shop Grade Ring Compressors

Compressor band takes all rings at once. Self-locking ratchet pawl prevents early release.

Description	Part #
2-1/8" to 5"	4206
3-1/2" to 7"	4207
3-1/2 " to 7" Truck & Tractor	4208



## 360 Degree Polished Aluminium Universal Head Holder

**Part # 4271**

Professional Grade Polished Aluminium Head Holder can be used with import and domestic heads. Stand allows heads to be rotated 360 Degrees. Slip resistant neoprene coated rails hold head in position and provide protection. Use with cams and cranks while measuring or magnafluxing. Can be mounted for increased stability



# ENGINE TOOLS

## Valve Lapping Tools



**Part # 4226**  
3/4" & 1-5/16" Cups,  
Made of Hardwood,  
Economy-style Valve  
Lapping Tool.

**Part # 4481**  
1-1/8" & 1-3/8" Cups,  
Made of Thick Hardwood,  
Medium-style Valve  
Lapping Tool



**Part # VLS001**  
The H.D. Power-Grip Valve Lapping  
Tool includes a Spring Loaded Plunger  
that accepts 3 sizes of suction cup 3/4"  
1" 1 1/4"

**Part # 4450D**  
Duplex Can (2 oz. of 120 Grit & 2  
oz. of 280 Grit) of Lapping  
Compound - 4 oz. Container.



## Valve Spring Compressors

**Part # 4260N**  
**Premium Air Operated Valve Spring  
Compressor**



New fast operating shop grade air powered valve spring  
compressor handles most types of valves springs  
including racing springs dual stage pneumatic controls  
operate the adjustable length ram optional spring shoes  
rebuild kit are available upon request.

### Includes:

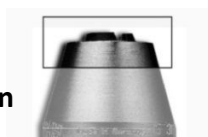
Small straight jaws for 7/8" to 1 7/8" diameters  
Medium offset jaws for 1" to 2" diameters

**Part # 4362**  
**Adjustable HD Screw-In Stud Remover**



Removes studs up to 1/2". Remove or install right and  
left-hand studs with ease - 1/2" square drive for hand  
tools or pneumatic impact tools. Flush mount jaws and  
tapered outer body lets you get between studs with as  
little as 3/4" clearance. Precision machined and  
hardened jaws for long life, no extra parts that are prone  
to breakage with repeated use.

**Part # 4362J**  
**Repl. Jaw Set for Screw-In  
Stud Remover**



**Part # 4275**  
**Overhead Valve Spring Compressor**

The new sleek design fits more applications than  
other valve spring compressors on the market !



**Part # 4608 Universal  
Valve Stem Seal  
Removal Pliers**



Remove seals on most OHC engines,  
including 4-valve cylinder heads that  
have a very narrow access to the  
seal. Pliers reach around valve stem  
for easy removal. Serrated tip  
removes OE or aftermarket seals.

# ENGINE TOOLS

## Chamfering Cone and Mandrel

Aluminum Oxide (60 Grit) 45 Degree Chamfering Cone. Use with 45 Degree Chamfering Cone Mandrel. Use to chamfer rough edges on cylinder after boring. Allows easier installation of pistons. Helps prevent piston ring damage. Use with portable drill.

**# A49**  
Chamfering Cone



**# A50**  
Chamfering Cone Mandrel  
5" Base x 1" top  
½" shank



## Fluorescent Magnetic Powder (1 Lb.)

**# 11231**



## Tube Grip Dispensing Tool

The Tube Grip provides a mechanical advantage which offers several important benefit compared to squeezing a tube b hand. Creates 10 times more pressure. Squeezes 35% more material out of the tube for a total of 96%. Eliminates most clean-up. Increases precision in application.



**# V200**

## Rod Bolt Stretch Indicator " A MUST HAVE TOOL "

Unit holds itself in place leaving both hands free to torque bolt properly. Instructions and Rod Bolt Stretch recommendations included

**# KK714**



## Diamond Dresser

7/16" x 3", 7/16"-20NF Thread, 3/4" Screw Head Diamond Dresser. Silver Seal offers a great selection of diamond dressers to fit your machine. All diamonds are thoroughly inspected to meet our quality control standards, insuring a high caliber diamond dresser at a competitive price.



## Ford Fuel Pump Eccentric Kit



**# 6557**

Ford Fuel Pump Eccentric Kit  
SB & BB

255/302/351M/351W/400M/429/460

**# 80697**

Suits Kwik-Way  
SV CV VS

See Page 113 Of The  
Silver Seal Cat For More  
Applications

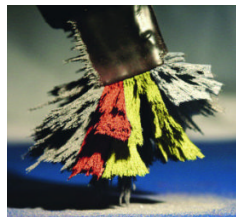
## Flywheel Grinding Coolant

1 Quart of Flywheel Grinding Coolant. A concentrated synthetic blend formulated for use in all types of flywheel grinders. Nitrite-free. Also works well as a rust inhibitor that provides up to 30 days indoor storage "Rust Protection" at a concentration as low as 3%. Recommended Dilution Ratio - 30:1 Mix Concentrate to Water. 1 Quart makes 7.5 Gallons.



## Original Magne test Powder (Yellow, 1 Lb.)

1 Lb. Yellow Magne test Iron Performance Powder is manufactured and blended right in our own facility for the highest quality crack detection powder available on the market today.



**# 10019**

***Can't See What You Need ?***  
*Please Refer To The Silver Seal Catalog  
For More Shop Tools And Workshop  
Supplies*



# ThreeBond

<b>Adhesive</b>	
1373B-10	10ml Bottle General Purpose Fast Cure Adhesive
1373B-250	250ml Bottle General Purpose Fast Cure Adhesive
1373B-50	50ml Bottle General Purpose Fast Cure Adhesive
1375B-10	10ml Bottle Adhesive For Small/Medium Components
1375B-250	250ml Bottle Adhesive For Small/Medium Components
1375B-50	50ml Bottle Adhesive For Small/Medium Components
1377B-10	10ml Bottle Adhesive For Large Components
1377B-250	250ml Bottle Adhesive For Large Components
1377B-50	50ml Bottle Adhesive For large Components
1741-56	56ml Bottle Fast Curing Adhesive for Rubber Wood & Metals
<b>All Purpose Liquid</b>	
SS1-330	
<b>Bearing Adhesive</b>	
1322-10	10ml Bottle Bearing Retainer Adhesive
1322-50	50ml Bottle Bearing Retainer Adhesive
<b>Brake Cleaner</b>	
SBC-480	
<b>Diesel Eng Conditioner</b>	
6601JC	
<b>Electrical Cleaner</b>	
6602CO-480	
<b>Gasket Adhesive</b>	
1102-200	200g Bottle Gasket Adhesive Yellow
1521C-150	150g Tube Ideal For Automotive/Motorcycle Handle Grips
<b>Gasket Stripper</b>	
P391D	
<b>Hydraulic Sealer</b>	
1344-10	10ml Bottle Hydraulic Sealer
1344-50	50ml Bottle Hydraulic Sealer
<b>Liquid Gasket Sealant</b>	
1104-100	100g Tube Synthetic Liquid Gasket Grey
1104-50-BP	50g Tube Synthetic Liquid Gasket Grey Blister Pack
1110F-100	100g Tube Synthetic Liquid Gasket
1207B-100	100g Tube RTV Silicone Liquid Gasket Black
1207B-340	340g Cartridge RTV Silicone Liquid Gasket Black
1207C-150	150g Tube RTV Silicone Liquid Gasket Red/Brown
1207C-333	333ml Cartridge RTV Silicone Liquid Gasket Red/Brown
1207D-150	150ml Tube Liquid Gasket Grey
1211-100	100g Tube RTV Silicone Liquid Gasket White
1212-100	
1215-250	250g Tube RTV Silicone Liquid Gasket Light Grey
1215-333	330g Cartridge RTV Silicone Liquid Gasket Light Grey
1216-120	120g Tude Liquid Gasket Grey

# ThreeBond

<b>Lubricant</b>	
1803C-400	THREEBOND SUPER LUBRICANT
1910-420	
<b>Metal Repair Kit</b>	
2089-80	
<b>Nut Adhesive</b>	
1324-10	
1324-50	
<b>Nut Lock</b>	
1324-250	Nut Lock
<b>Primer</b>	
1390-100	100ml Bottle Primer Activator
<b>Screw lock Adhesive</b>	
1342-10	10ml Bottle Screw Lock Adhesive
1342-50	50ml Bottle Screw Lock Adhesive
1401-200	200ml Bottle Clear
<b>Sealer</b>	
SS1-85-BP	Grey Super Sealer 85 g Blister Pack
SS2-85-BP	Red Super sealer 85g Blister Pack
<b>Stud Lock Adhesive</b>	
1305-10	10ml Bottle Stud Lock High Strength
1305-250	250ml Bottle Stud Lock High Strength
1305-50	50ml Bottle Stud Lock High Strength
<b>Super Cleaner Spray</b>	
6602T	Super Cleaner Spray
<b>Super Engine Conditioner</b>	
6601J	Super Engine Conditioner
<b>Tube Squeezer Key</b>	
TBKEY5	Silicone Tube Squeezer Keys 5 Pack
<b>Welch Plug Sealer</b>	
1386B-10	10ml Bottle Welch Plug Sealer
1386B-250	250ml Bottle Welch Plug Sealer
1386B-50	50ml Bottle Welch Plug Sealer



### **Cylinder Head Dowell Kit**

**Part # CHDK**

Head Dowel Kits now available.

Tired of looking for missing dowels?

This kit has just about every head dowel you will need!



### **Valve Guide Punch Kit**

**Part # PGPK**

Premier's valve guide punch kit is designed for installing and removing valve guides. Made out of quality heat treated tool steel these punches will go the distance. Kit includes four different sized punches to suit valve guide ID's from 5.5mm to 9mm and packaged in a handy steel powder coated kit box.



### **Valve Seat Insert Installation Kit**

**Part # ITK1000**

Premier's valve seat insert installation kit is just what you need for quick easy installation of valve seats. All parts are made from quality heat treated tool steel designed to take impact from the hardest of seats.

Simply choose the correct pilot for the valve guide to give correct alignment. Then choose the correct dolly to match the valve seat (4 double sided dolly's giving 8 options). Connect pilot and dolly to the handle and your ready to go.

All parts fit neatly into Premier's tough steel powder coated kit box



### **Valve Stem Install Kit**

**Part # VSSIK**

Premier's valve stem seal installation kit is a must for every head repair workshop.

Kit includes 8 handles and 11 pilots with a combination to match every size valve stem seal for easy installation. Handle selection will depend on the outside diameter of the seal (each handle has a different sized recessed hole at one end) and pilot selection will depend on inside diameter of seal. Simply screw the pilot into the recessed hole in handle and your ready to go.

Each handle has a replaceable nylon end to prevent damage.

The complete kit fits neatly into Premier's metal powder coated box.



### **Also Available .....**

**Premier Valve Guides**

**Welch Plugs**

**Valve seat Inserts**

**Sump Plugs**

**Sump Plug Washers**

**Bronze Valve Guide Liners**

**KV Parts**





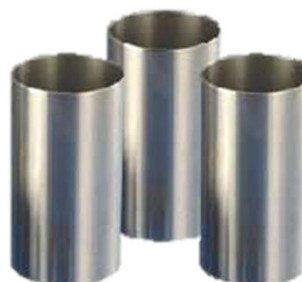
## ENGINE SLEEVES

Wall section

A = .062

B = .093

C = .125



N2504B X 7	NASON CYL SLEEVE	
N2543B X 5.2810	NASON CYL SLEEVE	
N2750B X 7.281	NASON CYL SLEEVE	
N2795A X 7.250	NASON CYL SLEEVE	
N2795B X 7.250	NASON CYL SLEEVE	
N2875A X 6.875	NASON CYL SLEEVE	
N2875B X 6.875	NASON CYL SLEEVE	
N2952B X 7.5	NASON CYL SLEEVE	
N3000A X 8.125	NASON CYL SLEEVE	
N3000B X 8.125	NASON CYL SLEEVE	
N3062B X 6.875	NASON CYL SLEEVE	
N3122B X 8.125	NASON CYL SLEEVE	
N3150B X 9	NASON CYL SLEEVE	
N3188A X 7.687	NASON CYL SLEEVE	
N3188B X 7.687	NASON CYL SLEEVE	
N3252B X 8.125	NASON CYL SLEEVE	
N3312B X 9	NASON CYL SLEEVE	
N3346B X 8.062	NASON CYL SLEEVE	
N3375B X 8.125	NASON CYL SLEEVE	
N3401B X 8.125	NASON CYL SLEEVE	
N3431B X 8.5	NASON CYL SLEEVE	
N3465B X 7.087	NASON CYL SLEEVE	
N3500B X 8.375	NASON CYL SLEEVE	
N3562B X 9	NASON CYL SLEEVE	
N3587A X 6.496	MITSUBISHI 4D55 4D56	SLEEVE LENGTH 165.00MM SLEEVE OD 94.20MM
N3623B X 6.5	NASON CYL SLEEVE	
N3623C X 6.5	NASON CYL SLEEVE	
N3625A X 6.500	NASON CYL SLEEVE	

## ENGINE SLEEVES



Wall section

A = .062

B = .093

C = .125

N3625B JAGUAR	Flanged Sleeve	FLANGED 3.625B X 7.00
N3625B X 9.687	NASON CYL SLEEVE	
N3625C X 10.250	NASON CYL SLEEVE	
N3680A X 6.25	NASON CYL SLEEVE	
N3680B X 6.5	NASON CYL SLEEVE	
N3680B X 8.625	NASON CYL SLEEVE	
N3680C X 6.5	NASON CYL SLEEVE	
N3687A X 7.500	NASON CYL SLEEVE	
N3687B X 9.000	NASON CYL SLEEVE	
N3687C X 7.500	NASON CYL SLEEVE	
N3700A X 5.850	NASON CYL SLEEVE	
N3700A X 6.750	NASON CYL SLEEVE	
N3700A X 6.555	NASON CYL SLEEVE	
N3700B ROVER	NASON CYL SLEEVE	RANGE ROVER 3.9L
N3700B X 7.000	NASON CYL SLEEVE	
N3750B X 9.875	NASON CYL SLEEVE	
N3812B X 8.750	NASON CYL SLEEVE	
N3845C X 9.500	NASON CYL SLEEVE	
N3858C X 11.810	NASON CYL SLEEVE	
N3875B X 10	NASON CYL SLEEVE	
N3875C X 9.500	NASON CYL SLEEVE	
N3898B X 5.510	FLANGE OD; 4.250 FLANGE DEPTH 0.315	S / F ID ; 3.868 FINSHED ID 3.898 OD; 4.115 O/L 5.510
N3911A X 6.250	NASON CYL SLEEVE	
N3911A X 6.500	Special order (D N R )	SLEEVE HAS NO CHAMFER OR LEAD IN EDGES ID; 3.870 S/F BORE OD; 4.038 LENG 6.500
N3911B X 6	NASON CYL SLEEVE	
N3911B X 7.500	NASON CYL SLEEVE	
N3937B X 10	NASON CYL SLEEVE	
N4000B X 5.10	Flange Sleeve Flange od 4.250 Flange Depth 0.315	Semi finished id 3.970 Finished Id LS2;4.00 LS3; 4.060 OD 4.200

Wall section

A = .062

B = .093

C = .125

## ENGINE SLEEVES



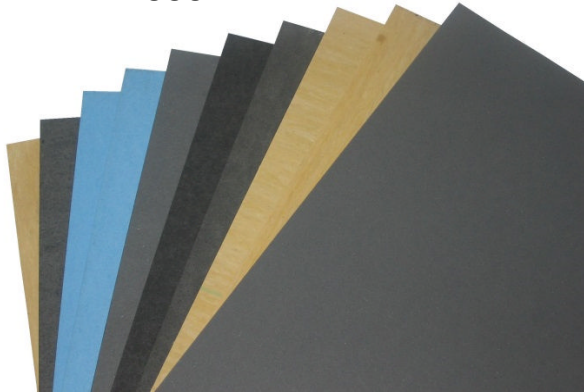
N4001A X 9.875	NASON CYL SLEEVE	Size 4.001 x 9.875 x .062
N4001B X 9.875	NASON CYL SLEEVE	
N4004B X 6	NASON CYL SLEEVE	
N4004C X 6	NASON CYL SLEEVE	
N4050B X 6.5	NASON CYL SLEEVE	
N4062B X 10.5	NASON CYL SLEEVE	
N4125B X 10.5	NASON CYL SLEEVE	
N4125C X 10.5	NASON CYL SLEEVE	
N4220B X 10.50	NASON CYL SLEEVE	
N4220C X 10.50	NASON CYL SLEEVE	
N4250B X 11.5	NASON CYL SLEEVE	
N4250C X 11.50	NASON CYL SLEEVE	
N4286D X 8.610	NASON CYL SLEEVE	LINER FORD 240 360 DIESEL
N4400B X 12.25	NASON CYL SLEEVE	
N4400C X 12.250	NASON CYL SLEEVE	
N4500B X 11.50	NASON CYL SLEEVE	
N4500C X 11.50	NASON CYL SLEEVE	
N1625B X 12.250	NASON CYL SLEEVE	
N4750C X 12.25	NASON CYL SLEEVE	
N5400 X 2.000	NASON CYL SLEEVE	LOWER BLOCK INSERT CATERPILLER 3300
N5750CL X 17.00	NASON CYL SLEEVE	
N5872C X 6.128	NASON CYL SLEEVE	
N6000C X 17.000	NASON CYL SLEEVE	
N6125C X 17.00	NASON CYL SLEEVE	
N6220 X 1.580	NASON CYL SLEEVE	LOWER BLOCK INSERT CATERPILLER 3400
N6750CL X 17.00	NASON CYL SLEEVE	
N7000C X 22	NASON CYL SLEEVE	
N7800 X 2.00	NASON CYL SLEEVE	LOWER BLOCK INSERT CATERPILLER 3500

### MULTI PACK GASKET MATERIAL

Handy selection of fibre based materials in one convenient pack. Contents includes one sheet of each of the following : BOJ 0.4, 0.8, 1.5; S207 0.8, 1.6; N8094 0.8, 1.6; CFM 0.4, 0.8, 1.5

Multi-Pak - sheet size 250x500mm

#### AMP6004



### BOJ GASKET MATERIAL

Cellulose Fibre material with Styrene Butadiene binder.

General purpose gasket material suitable for sealing water oil and fuel where bolt loading temperatures and pressures are low. i.e.: thermostats, timing cover gaskets water, fuel and oil pumps.

Colour: Black

- AMP0041** BOJ 0.40mm - sheet size 500x1000mm
- AMP0044** BOJ 0.40mm - sheet size 250x500mm
- AMP0049** BOJ 0.40mm - sheet size 1000x5000mm
- AMP0081** BOJ 0.80mm - sheet size 500x1000mm
- AMP0084** BOJ 0.80mm - sheet size 250x500mm
- AMP0089** BOJ 0.80mm - sheet size 1000x5000mm
- AMP0151** BOJ 1.50mm - sheet size 500x1000mm
- AMP0154** BOJ 1.50mm - sheet size 250x500mm
- AMP0159** BOJ 1.50mm - sheet size 1000x5000mm



### CORK RUBBER GASKET MATERIAL

High quality Cork Rubber. Suitable for rocker covers, oil pans, etc.

- AMP3150** Cork Rubber 1.50mm - sheet size 630x1270mm
- AMP3153** Cork Rubber 1.50mm - sheet size 630x760mm
- AMP3300** Cork Rubber 3.0mm - sheet size 630x1270mm
- AMP3303** Cork Rubber 3.0mm - sheet size 630x760mm
- AMP3450** Cork Rubber 4.50mm - sheet size 630x1270mm
- AMP3453** Cork Rubber 4.50mm - sheet size 630x760mm
- AMP3600** Cork Rubber 6.0mm - sheet size 630x1270mm
- AMP3603** Cork Rubber 6.0mm - sheet size 630x760mm

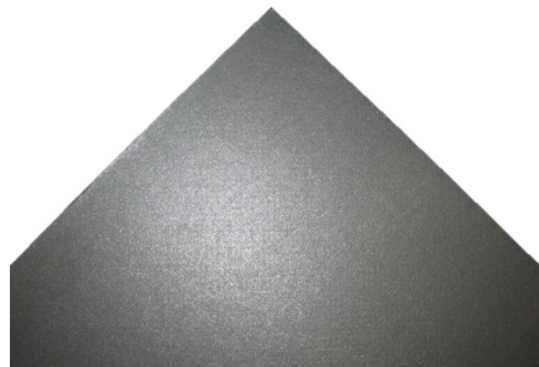


### DSM GASKET MATERIAL

Double Sided Material - perforated steel core laminated between fibre facing material

Suitable for applications where temperatures are high and change rapidly such as exhaust manifolds.

- AMP1181** DSM 1.80mm - sheet size 250x750mm
- AMP1182** DSM 1.80mm - sheet size 160x750mm



## S207 GASKET MATERIAL

Reinforced Cellulose "Controlled Swell" material with latent cure Styrene Butadiene binder. S207 seals oils, coolant and low pressure steam where temperatures are below 180° C (350° F). Significant thickness increase occurs at the exposed internal edge of the gasket with many fluids dramatically improving sealability. The heat of application then vulcanises the material to limit further swelling and provide fully cured performance.  
 Colour: Blue

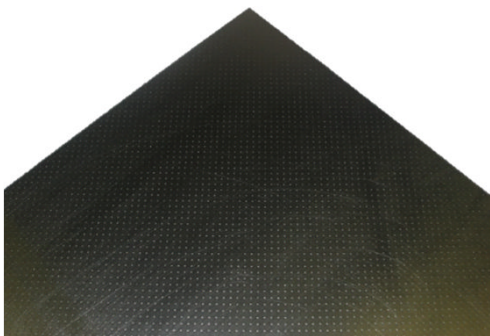
- AMP2081** S207 0.80mm - sheet size 500x1000mm
- AMP2084** S207 0.80mm - sheet size 250x500mm
- AMP2161** S207 1.60mm - sheet size 500x1000mm
- AMP2164** S207 1.60mm - sheet size 250x500mm



## GRAPHITE GASKET PAPER

Double Sided Graphite - perforated steel core laminated between graphite facing material. Suitable for applications where temperatures are high and change rapidly such as exhaust manifolds.

- AMP1481** Graphite 1.80mm - sheet size 250x750mm
- AMP1482** Graphite 1.80mm - sheet size 160x750mm



## CFM GASKET MATERIAL

Compressed Fibre Material with synthetic rubbers reinforced with organic and inorganic fibres. Suitable for applications with higher bolt loads. Recommended for temperatures up to 150° C (300° F) and pressures up to 50 bar (580 psi)

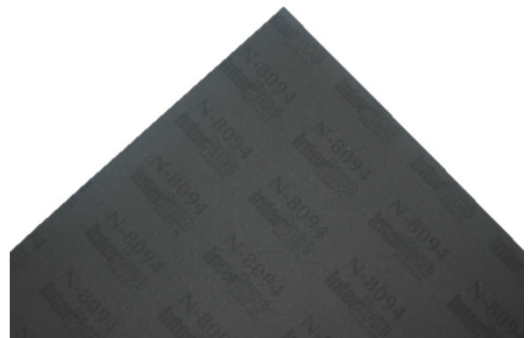
- AMP5044** CFM 0.50mm - sheet size 250x500mm
- AMP5046** CFM 0.50mm - sheet size 500x750mm
- AMP5084** CFM 0.80mm - sheet size 250x500mm
- AMP5086** CFM 0.80mm - sheet size 500x750mm
- AMP5154** CFM 1.50mm - sheet size 250x500mm



## N8094 GASKET MATERIAL

Reinforced Cellulose with fully cured Nitrile Butadiene binder. N8094 is an economical material exhibiting very good crush resistance at high flange pressures. Recommended for sealing oil, fuels and water below 180° C (350° F). Colour: Grey

- AMP8081** N8094 0.80mm - sheet size 500x1000mm
- AMP8084** N8094 0.80mm - sheet size 250x500mm
- AMP8161** N8094 1.60mm - sheet size 500x1000mm
- AMP8164** N8094 1.60mm - sheet size 250x500mm







### **ATAG102-1000**

1,000 Paper Identification Tags  
48X95mm complete with wire tie and  
marking pen. Suitable for recording  
job numbers on components.



### **ATAG101-1000**

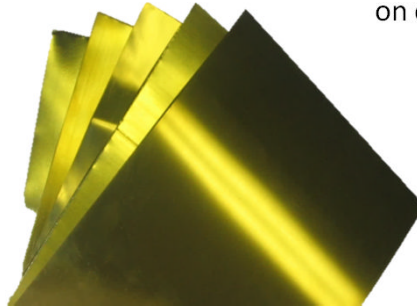
1,000 non corrosive  
Brass Identification  
Tags 25x70mm  
complete with wire  
tie. Suitable for  
recording job numbers  
on components.



### **AMP6005**

#### **Brass Shim Pak - sheet size 150x300mm**

Selection of Brass Shim sheets in  
the following thicknesses: 0.05,  
0.08, 0.10, 0.12, 0.25mm.



AA Gaskets manufactures a range of proprietary brands and supplies them to engine rebuilders and resellers through an efficient and responsive international network of automotive parts distributors.

Proprietary brands include:



Engineered and designed to precise tolerances - Permaseal  
MLS-R High Performance Head Gaskets.



Budget priced Crossfire, standard grade for a cheaper  
alternative for regular passenger vehicles.



High quality Permaseal for standard applications including  
passenger vehicles, off road and commercial vehicles.

Please use the attached links to two web sites

<http://aagaskets.com.au>

**And the NEW Crossfire web site**

<http://crossfiregaskets.com>



### **Super Glue**

VT30120	Surface Insentative Gen Purpose
VT30620	Surface Insensitive Wicking Grade
VT38020	Bond Metal To Metal and Rubber
VT39528	General Purpose
VTASG20	Automotive Super Glue ASUP-1 Instant SuperGlue 20 gram bottle

### **Thread Lock**

VT11110	Anaerobic Thread locker 222 Low Strength 10ml
VT11125	Anaerobic Thread locker 222 Low Strength 250ml
VT11150	Anaerobic Thread locker 222 Low Strength 50ml
VT12110	Anaerobic Thread locker 242 Medium Strength 10ml
VT12125	Anaerobic Thread locker 242 Medium Strength 250ml
VT12150	Anaerobic Thread locker 242 Medium Strength 50ml
VT12202	Medium Strength Oil Tolerant
VT12202-10	Medium Strength Oil Tolerant
VT12202-40	Medium Strength Oil Tolerant
VT12210	Medium Strength Oil Tolerant
VT12225	Medium Strength Oil Tolerant
VT12250	Medium Strength Oil Tolerant
VT13110	Permanent Strength
VT13125	Permanent Strength
VT13150	Permanent Strength
VT14002-10	High Strength
VT14002-40	High Strength
VT14010	High Strength
VT14025	High Strength
VT14050	High Strength
VT15050	High Strength

### **Thread Sealant**

VT42750	Anaerobic High Strength Yellow ND 577
VT44050	Thread Sealants ND545 50ml Tube
VT44450	Thread Sealants ND569 50ml bottle
VT46050	Anaerobic Gen Purpose Fuel Resisant

### **Welch Plug Sealant**

VT962T50	Anaerobic Retaining Compounds
----------	-------------------------------



# Vibra-TITE®

## Anti-Seize Compound

VT90705	Aluminium Compound
VT90708	Aluminium Compound
VT90715	Copper Compound
VT90718	Copper Compound
VT90722	Nickel Compound 20 Litre Pail
VT90725	Nickel Compound
VT90728	Nickel Compound

## Liquid Gasketing

VT73050	Anaerobic Liquid Gasketing 518 Flexible / Solvent Resistant 50ml tube
VT73250	Gen Purpose Flexible Gasket Maker

## Refrigerant Sealant

VT44650	High Pressure
---------	---------------

## Retaining Compound

VT53010	General Purpose
VT53050	General Purpose Retaining Compound
VT54110	High Strength Slip Fit
VT54125	High Strength Slip Fit
VT54150	High Strength Slip Fit
VT56710	High Temperature Large Gap
VT56750	High Temperature Large Gap

## Silicone Gasketing

VT56993	Advanced Silicone Gasketing Oil Resistant Rigid Flange
VT73030	Flexible Solvent Resistant
VT73230	Flexible Gasket Maker
VT78730	Advanced Silicone Blue Oil Rest Flexible





### Engine Pro Con Rod Bolt Sleeves

Pk of 50

Part # BB1-50



### Engine Pro Accessory Bolts

Suits Sump, Inlet Manifolds, Distributor, Headers  
12 point 8740 chrome moly steel  
Black oxide finish.



3/8" x 1.000 Part # 375-1000-50  
3/8" x 1.250 Part # 375-1250-50

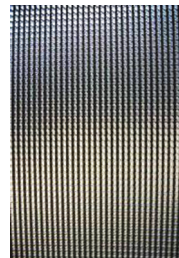
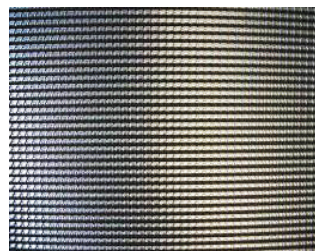
### Push Rod Length Checker

Aluminium Alloy Twelve Tubes in 1/2" increments 6" to 12"

Part # LC5A-K



## LOOKING FOR HEAT SHIELD ? RING NASON ENGINE PARTS FOR SIZE'S AND PRICE'S



### NASON VALVE SHIMS

Nason Now Has A Wide Range Of Valve Shims For Most Popular Applications  
From 25mm To 37mm od  
In Thickness Up To 3.70mm  
Ring Nason Engine Parts for more details



# HEATTABS

# HTA

### Heat Tabs & Adhesive





## LUBES , ADDITIVES & OTHERS



### Assembly Lubes

Moly Lube Paste 10 Oz  
Brush Top  
**40-1000**



Engine Pro Zinc Engine  
Assembly Lube  
8oz Bottle  
**40-1100**



### Engine Oil Additives

**40-1900**  
With ZDDP



**40-2000**  
Without zinc



ARP Ultra-Torque  
1 pint bottle  
Fastener Assembly Lubricant  
**# 100-9911**



ARP Ultra-Torque  
0.5 Oz Sachets  
Fastener Assembly Lubricant  
**# 100-9908**

## RACE WAX

### PART # JG-RACE WAX

Race Wax leaves a smooth, glossy finish that helps shed tire rubber, dirt and bugs. Race Wax cleans and shines glass, chrome, paint, plastic, tires and vinyl. It is a perfect product for fiberglass cars, decal wrapped race cars and hot rods. Perfect for a quick touch up clean and shine at the car show or race track, Race Wax can be used in direct sunlight and on cars that have not been washed. The clean and shine from Race Wax makes your car look sharp, and it makes clean up quick and easy without damaging the paint, windows, chrome or decal graphics.

- Delivers a Low Drag, High Gloss Finish
- Effectively Sheds Dirt, Rubber & Debris
- Quick & Easy Application
- Clean Up is Simple
- Perfect for Cleaning & Protecting:
  - Painted Surfaces
  - Full Decal Wraps
  - Fiberglass Panels



**PART # JG-DG**

## SPEED CLEAN

Wipes Away Rubber, Bugs, Dirt, & Grime  
Speed Clean's foaming action lifts away honing residue from cylinder bores and cleans away greasy films. Excellent for cleaning away cosmoline and microscopic dirt and debris from new engine parts prior to assembly. Prepares the surface for full adhesion of the assembly lubricant. Simply spray on, let soak, and then wipe off.

Cuts Tough Grease, Grime & Rubber  
Quick & Easy Foaming Action Spray  
Won't Harm Paint; Leaves No Residue  
Unlimited Home, Shop & Track Uses



## BRAKE AND PARTS CLEANER

### PART # JG-BRAKECLEANER



Quickly Removes Oil, Grease, & Residue Without Leaving A Film  
 Powerful & quick cleaning performance makes Driven Brake & Parts Cleaner a must for every shop and toolbox. Non-chlorinated formula prevents chemical etching that can lead to part fractures. Dries quickly and does not leave an oily film. Meets all United States VOC requirements.

**Quickly Removes Brake Fluid, Grease, Oil & Other Contaminants from Brake Lining & Drums**

**Quickly Cuts Through Grease & Grime, but it Does Not Leave an Oily Film**

**Fast-Drying Formula Gets the Job Done While Using Less Spray Compared to Watered Down Cleaners**

Non-Chlorinated - NHRA Legal    Excellent General Parts Cleaner

## ENGINE ASSEMBLY GREASE

### PART # JG-AG-1LB

Also Available In 1oz Tube **PART # JG-AG-1OZ**

Recommended by leading camshaft manufacturers, this unique extreme pressure lube dissolves completely in oil without clogging oil passageways or plugging oil filters. Proven to cling to and protect surfaces during initial start-up, Driven Engine Assembly Grease delivers protection you can count on. Apply to cams and lifters for break-in protection. It can also be used on distributor gears, rocker shafts, rocker tips, pushrod tips, wrist pins and valve guides. Combined with BR series break-in oils provides proven protection during break-in. 1LB TUB



## HIGH VISCOSITY ASSEMBLY LUBRICANT

### PART # JG-HVL



High viscosity assembly lubricant (HVL) provides a tenacious yet fluid film to protect reciprocating and rotating components during assembly and initial break-in. This non-foaming product mixes with the break-in oil and extends the oil film thickness during the critical break-in process. Fortified with ZDDP. Apply to engine bearings, piston skirts, bushings, timing chains and gears, as well as oil pump gears. HVL will not harden or cause parts to become "sticky."

## CSP - COOLANT SYSTEM PROTECTOR

### PART # JG-CSP

Protect your engine block, cylinder heads, water pump and radiator from deposits and corrosion that reduce the effectiveness of your cooling system. Don't put your engine at risk from the corrosive effects of coolants mixed with non-distilled water. The minerals in regular water and well water cause corrosion and degrade the performance of the coolant. CSP neutralizes these minerals and prevents damage due to hard water. This is especially important when you add make-up water to the coolant system. CSP prevents corrosion in modern "orange" OAT coolants, traditional "green" anti-freeze and straight water. Keeps engine coolant passages clean and lubricates water pumps. Do not mix with other coolant additives.





## Part # JG-CD Carb Defender® Fuel Additive

Designed for carbureted classic and performance vehicles, this concentrated additive prevents costly repairs and poor performance resulting from the use of corrosive ethanol-blended pump gas or flex fuels.

## Carb Defender® Race Concentrate Fuel Additive

Part # JG-CD RACE

Designed for carbureted race engines that use Methanol, E85 or Oxygenated race fuel, Driven's Carb Defender™ Race Concentrate prevents corrosion and deposits in the fuel system and intake tract.

Driven's Carb Defender Race Concentrate delivers specially formulated additives that protect against carburetor corrosion and induction deposits. Special corrosion inhibitors work to prevent damage and diminished performance caused by fuels containing Methanol and Ethanol, as well as the moisture these fuels attract. This powerful new additive controls combustion chamber residue, plus cleans and protects surfaces of the fuel system and intake tract. Carb Defender Race Concentrate also contains a multi-functional lubricant so "top lubes" are not required. Just one bottle of additive treats up to 55 gallons of fuel, and the bottle features a handy view strip to let users measure out doses for as little as five gallons of gas. Driven Racing Oil™ Carb Defender Race Concentrate works with Methanol, E85 and race fuels, and it is compatible with spec fuel and water tests.



## Extreme Pressure Chassis Grease

Part # JG-EPC



A premium extreme pressure grease with greater load carrying and a higher dropping point than traditional lithium greases. EPC delivers exceptional mechanical stability for improved protection. Designed for high temperature and high load applications.  
 400 mg. Cartridge

## Spline Grease

Part # JG-SPLINE

A premium extreme pressure grease with greater load carrying and a higher dropping point than traditional lithium greases. EPC delivers exceptional mechanical stability for improved protection. Designed for high temperature and high load applications. 1/2 lb. Tub

Engineered for race applications with sliding spline teeth operating at high temperatures & RPM's: Driven Racing Oil Spline Grease utilizes a high viscosity synthetic base, proprietary anti-wear additives & a Polyurea thickener that is specifically developed to extend durability.

High viscosity synthetic base stocks create enhanced thermal stability and oxidation resistance, while the robust anti-wear additive package is fortified with Moly for excellent wear protection. Meanwhile, the Polyurea thickener controls oil loss from the grease in extreme temperature environments.







**Part # JG-BR**

## BR Break-In 15W-50

Recommended by multiple cam manufacturers, this unique petroleum oil provides optimum levels of Zinc and Phosphorus for flat tappet and aggressive roller valve trains, and the additive package promotes ring seal. Provides the maximum protection available for cams and lifters during initial break-in. Does not require additional ZDDP additives. Good for full power pulls on the dyno, one night of racing or up to 400 miles on the street. Viscosity typical of 15W-50.

ZDDP-Fortified Cam Protection  
Chemically Seals Piston Rings  
Protects Bearings & Journals

## BR30 Break-In Oil 5W-30

The same high Zinc and Phosphorus formula as our original break-in oil, now in an SAE 5W-30 viscosity for modern OEM rebuilds and hydraulic lifter engines. Provides excellent ring sealing. Does not require additional ZDDP additives. Good for full power pulls on the dyno, one night of racing or up to 400 miles on the street. Viscosity typical of 5W-30.

ZDDP-Fortified Cam Protection  
Chemically Seals Piston Rings  
Protects Bearings & Journals



**Part # JG-BR30**

## BR40 Break-In 10W-40

The same high Zinc and Phosphorus formula as our original break-in oil, now in SAE 10W-40 viscosity. Well suited for classic muscle car, European sports car and motorcycle engines. Ideal for flat tappet and aggressive roller valve trains, as well as Ethanol- blended, pure Methanol and oxygenated race fuels. Does not require additional ZDDP additives. Good for dyno testing, one night of racing or up to 400 miles on the street. Viscosity typical of 10W-40.

ZDDP-Fortified Cam Protection  
Chemically Seals Piston Rings  
Protects Bearings & Journals



**Part # JG-BR40**

*WE ALSO CARRY DRIVEN ENGINE OILS  
SPEAK TO YOUR NASON CONTACT FOR DETAILS*

## Notes And New Additions